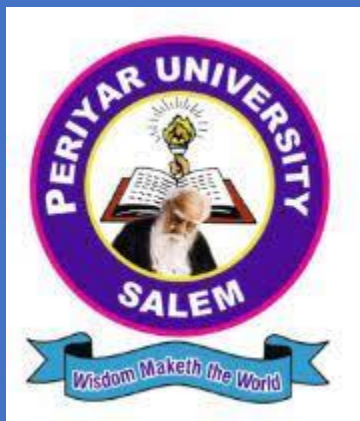


STAKEHOLDERS FEEDBACK ANALYSIS REPORT

STUDENTS FEEDBACK (2024-25)



**PERIYAR UNIVERSITY
SALEM**

Table of Contents

TABLE – 1:QUESTIONS ASKED	2
TABLE – 2:DISTRIBUTION OF RESPONSES FROM STUDENTS (2024-2025)	4
TABLE – 3:STUDENT RESPONSE DISTRIBUTION IN PERCENT (2024-2025)	7
TABLE – 4:DEPARTMENT OF BIOCHEMISTRY	9
TABLE – 5:DEPARTMENT OF BIO TECHNOLOGY	14
TABLE – 6:DEPARTMENT OF BOTANY	19
TABLE – 7:DEPARTMENT OF CHEMISTRY	24
TABLE – 8:DEPARTMENT OF COMMERCE	29
TABLE – 9:DEPARTMENT OF COMPUTER SCIENCE	34
TABLE – 10:DEPARTMENT OF ECONOMICS	39
TABLE – 11:DEPARTMENT OF EDUCATION	44
TABLE – 12:DEPARTMENT OF ENERGY SCIENCE	49
TABLE – 13:DEPARTMENT OF ENGLISH	54
TABLE – 14:DEPARTMENT OF ENVIRONMENTAL SCIENCE	59
TABLE – 15:DEPARTMENT OF FOOD SCIENCE AND NUTRITION	64
TABLE – 16:DEPARTMENT OF GEOLOGY	69
TABLE – 17:DEPARTMENT OF HISTORY	74
TABLE – 18:DEPARTMENT OF JOURNALISM AND MASS COMMUNICATION	79
TABLE – 19:DEPARTMENT OF LIBRARY AND INFORMATION SCIENCE	84
TABLE – 20:DEPARTMENT OF MANAGEMENT STUDIES	89
TABLE – 21:DEPARTMENT OF MATHEMATICS	94
TABLE – 22:DEPARTMENT OF MICROBIOLOGY	99
TABLE – 23:DEPARTMENT OF NUTRITION AND DIETETICS	104
TABLE – 24:DEPARTMENT OF PHYSICS	109
TABLE – 25:DEPARTMENT OF PSYCHOLOGY	114
TABLE – 26:DEPARTMENT OF SOCIOLOGY	119
TABLE – 27:DEPARTMENT OF STATISTICS	124
TABLE – 28:DEPARTMENT OF TAMIL	129
TABLE – 29: DEPARTMENT OF TEXTILES AND APPAREL DESIGN	134
TABLE – 30:DEPARTMENT OF ZOOLOGY	139
STUDENTS FEEDBACK ANALYSIS REPORT	144

FEEDBACK FROM STUDENTS

The Internal Quality Assurance Cell (IQAC) of Periyar University collects feedback from students on the Design and review of the syllabus, Academic Teaching and Learning Facilities, Campus Facilities, and Extension Activities of the University. The rating scale is fixed as strongly agree, agree, neither agree nor disagree, Disagree, and strongly disagree. A total of 1728 students have given their feedback. This report presents a list of questions, department-wise analysis, and overall analysis.

Number of feedback received in 2024-25 year

Year	Number of Students
2024-25	1728

Table – 1: Questions Asked

S.no	Questions	Metrics
1	The curriculum provides strong industry-oriented learning experiences.	Curriculum Feedback
2	The courses effectively develop my technical skills.	
3	The program helps me develop essential soft skills for professional success.	
4	The curriculum incorporates valuable life skills and professional development opportunities.	
5	The courses emphasize ethical values and social responsibility.	
6	The program offers comprehensive exposure to the Indian knowledge system.	
7	Faculty members demonstrate high academic and professional qualifications.	Teaching and Learning Process Feedback
8	Faculty members effectively explain complex concepts with clarity.	
9	Teaching methods are engaging and support diverse learning styles.	
10	Faculty members maintain a supportive and approachable relationship with students.	
11	The syllabus is comprehensive and covers all essential topics thoroughly.	
12	Faculty members provide adequate support for self-learning and additional exploration.	
13	Campus infrastructure supports effective learning through modern	Infrastructure

	classrooms, laboratories, and advanced technological resources.	and Campus Life Feedback
14	Library facilities provide comprehensive academic and research resources for in-depth learning.	
15	Integrated campus services ensure student convenience, including banking, ATM, post office, canteen, and bookstore facilities.	
16	Health and wellness facilities offer professional medical support and comprehensive student care.	
17	Physical education and recreational facilities promote holistic student development and well-being.	
18	The campus environment enables academic, personal, and professional growth through inclusive and advanced infrastructure.	
19	The university provides effective mentoring for career development.	Placement and Entrepreneurship Support Feedback
20	Placement drives are well-organized and offer quality job opportunities.	
21	The (Institutions Innovation Council) IIC supports student creativity (innovation) effectively.	
22	Entrepreneurship development activities are comprehensive and inspiring.	
23	The university provides excellent guidance for start-up initiatives.	
24	Placement support extends beyond job placement to holistic career guidance.	
25	NSS, YRC, RRC activities contribute meaningfully to social awareness and development.	Extension Activities and Grievance Redressal Feedback
26	Awareness programs (blood donation camp etc.,) effectively address societal challenges.	
27	The university actively supports government social schemes (Swatch Bharat, voter awareness, social responsibility programmes etc.).	
28	The university provides clear and accessible channels for reporting student grievances.	
29	Grievance redressal mechanisms are transparent and handled with confidentiality and fairness.	
30	The university demonstrates a proactive approach in resolving student concerns in a timely manner.	

Table – 2: Distribution of Responses from Students (2024-25)

Questions	Strongly Agree	Agree	Neither agree nor Disagree	Disagree	Strongly Disagree	Total
The curriculum provides strong industry-oriented learning experiences.	623	938	123	35	9	1728
The courses effectively develop my technical skills.	677	858	148	33	12	1728
The program helps me develop essential soft skills for professional success.	653	891	143	35	6	1728
The curriculum incorporates valuable life skills and professional development opportunities.	605	896	171	34	22	1728
The courses emphasize ethical values and social responsibility.	628	895	154	27	24	1728
The program offers comprehensive exposure to the Indian knowledge system.	639	878	159	37	15	1728
Faculty members demonstrate high academic and professional qualifications.	865	751	87	17	8	1728
Faculty members effectively explain complex concepts with clarity.	760	803	131	25	9	1728
Teaching methods are engaging and support diverse learning styles.	706	829	146	36	11	1728
Faculty members maintain a supportive and approachable relationship with students.	742	771	156	42	17	1728
The syllabus is comprehensive and covers all essential topics thoroughly.	662	831	168	48	19	1728
Faculty members provide adequate support for self-learning and additional exploration.	714	837	137	30	10	1728
Campus infrastructure	681	802	169	54	22	1728

supports effective learning through modern classrooms, laboratories, and advanced technological resources.						
Library facilities provide comprehensive academic and research resources for in-depth learning.	745	794	140	29	20	1728
Integrated campus services ensure student convenience, including banking, ATM, post office, canteen, and bookstore facilities.	813	717	138	33	27	1728
Health and wellness facilities offer professional medical support and comprehensive student care.	644	784	205	64	31	1728
Physical education and recreational facilities promote holistic student development and well-being.	491	829	258	93	57	1728
The campus environment enables academic, personal, and professional growth through inclusive and advanced infrastructure.	640	850	175	36	27	1728
The university provides effective mentoring for career development.	669	835	166	45	13	1728
Placement drives are well-organized and offer quality job opportunities.	452	839	315	88	34	1728
The (Institutions Innovation Council) IIC supports student creativity (innovation) effectively.	569	872	222	46	19	1728
Entrepreneurship development activities are comprehensive and inspiring.	557	885	211	55	20	1728
The university provides excellent guidance for start-up initiatives.	642	809	208	52	17	1728
Placement support extends beyond job placement to	548	811	263	77	29	1728

holistic career guidance.						
NSS, YRC, RRC activities contribute meaningfully to social awareness and development.	680	822	168	43	15	1728
Awareness programs (blood donation camp etc.,) effectively address societal challenges.	727	822	136	32	11	1728
The university actively supports government social schemes (Swatch Bharat, voter awareness, social responsibility programmes etc.).	734	808	146	25	15	1728
The university provides clear and accessible channels for reporting student grievances.	586	873	202	48	19	1728
Grievance redressal mechanisms are transparent and handled with confidentiality and fairness.	537	910	219	38	24	1728
The university demonstrates a proactive approach in resolving student concerns in a timely manner.	612	881	178	37	20	1728

Table – 3: Student response distribution in percent (2024-2025)

Questions	Strongly Agree (%)	Agree (%)	Neither agree nor Disagree (%)	Disagree (%)	Strongly Disagree (%)	Total (%)
Curriculum Feedback						
The curriculum provides strong industry-oriented learning experiences.	36	54	7	2	1	100
The courses effectively develop my technical skills.	39	50	9	2	1	100
The program helps me develop essential soft skills for professional success.	38	52	8	2	0	100
The curriculum incorporates valuable life skills and professional development opportunities.	35	52	10	2	1	100
The courses emphasize ethical values and social responsibility.	36	52	9	2	1	100
The program offers comprehensive exposure to the Indian knowledge system.	37	51	9	2	1	100
Teaching and Learning Process Feedback						
Faculty members demonstrate high academic and professional qualifications.	50	43	5	1	0	100
Faculty members effectively explain complex concepts with clarity.	44	46	8	1	1	100
Teaching methods are engaging and support diverse learning styles.	41	48	8	2	1	100
Faculty members maintain a supportive and approachable relationship with students.	43	45	9	2	1	100
The syllabus is comprehensive and covers all essential topics thoroughly.	38	48	10	3	1	100
Faculty members provide adequate support for self-learning and additional exploration.	41	48	8	2	1	100

Infrastructure and Campus Life Feedback						
Campus infrastructure supports effective learning through modern classrooms, laboratories, and advanced technological resources.	39	46	10	3	1	100
Library facilities provide comprehensive academic and research resources for in-depth learning.	43	46	8	2	1	100
Integrated campus services ensure student convenience, including banking, ATM, post office, canteen, and bookstore facilities.	47	41	8	2	2	100
Health and wellness facilities offer professional medical support and comprehensive student care.	37	45	12	4	2	100
Physical education and recreational facilities promote holistic student development and well-being.	28	48	15	5	3	100
The campus environment enables academic, personal, and professional growth through inclusive and advanced infrastructure.	37	49	10	2	2	100
Placement and Entrepreneurship Support Feedback						
The university provides effective mentoring for career development.	39	48	10	3	1	100
Placement drives are well-organized and offer quality job opportunities.	26	49	18	5	2	100
The (Institutions Innovation Council) IIC supports student creativity (innovation) effectively.	33	50	13	3	1	100
Entrepreneurship development activities are comprehensive and inspiring.	32	51	12	3	1	100
The university provides excellent guidance for start-up initiatives.	37	47	12	3	1	100
Placement support extends beyond job placement to holistic career guidance.	32	47	15	4	2	100

Extension Activities and Grievance Redressal Feedback						
NSS, YRC, RRC activities contribute meaningfully to social awareness and development.	39	48	10	2	1	100
Awareness programs (blood donation camp etc.,) effectively address societal challenges.	42	48	8	2	1	100
The university actively supports government social schemes (Swatch Bharat, voter awareness, social responsibility programmes etc.).	42	47	8	1	1	100
The university provides clear and accessible channels for reporting student grievances.	34	51	12	3	1	100
Grievance redressal mechanisms are transparent and handled with confidentiality and fairness.	31	53	13	2	1	100
The university demonstrates a proactive approach in resolving student concerns in a timely manner.	35	51	10	2	1	100

Table – 4: Department of Biochemistry

Total Number of Students: 34

S.No.	Questions	Strongly Agree (%)	Agree (%)	Neither agree nor Disagree (%)	Disagree (%)	Strongly Disagree (%)	Mean score
Curriculum Feedback							
1.	The curriculum provides strong industry-oriented learning experiences.	65	35	0	0	0	4.65
2.	The courses effectively develop my technical skills.	74	24	2	0	0	4.71
3.	The program helps me develop essential soft	71	29	0	0	0	4.71

	skills for professional success.						
4.	The curriculum incorporates valuable life skills and professional development opportunities.	62	38	0	0	0	4.62
5.	The courses emphasize ethical values and social responsibility.	68	32	0	0	0	4.68
6.	The program offers comprehensive exposure to the Indian knowledge system.	71	29	0	0	0	4.71
Teaching and Learning Process Feedback							
7.	Faculty members demonstrate high academic and professional qualifications.	88	12	0	0	0	4.88
8.	Faculty members effectively explain complex concepts with clarity.	68	32	0	0	0	4.68
9.	Teaching methods are engaging and support diverse learning styles.	76	24	0	0	0	4.76
10.	Faculty members maintain a supportive and approachable relationship with students.	79	21	0	0	0	4.79

11.	The syllabus is comprehensive and covers all essential topics thoroughly.	76	24	0	0	0	4.76
12.	Faculty members provide adequate support for self-learning and additional exploration.	79	21	0	0	0	4.79
Infrastructure and Campus Life Feedback							
13.	Campus infrastructure supports effective learning through modern classrooms, laboratories, and advanced technological resources.	76	24	0	0	0	4.76
14.	Library facilities provide comprehensive academic and research resources for in-depth learning.	68	32	0	0	0	4.68
15.	Integrated campus services ensure student convenience, including banking, ATM, post office, canteen, and bookstore facilities.	85	12	3	0	0	4.82
16.	Health and wellness facilities offer professional medical support and comprehensive student care.	68	32	0	0	0	4.68
17.	Physical education and	56	44	0	0	0	4.56

	recreational facilities promote holistic student development and well-being.						
18.	The campus environment enables academic, personal, and professional growth through inclusive and advanced infrastructure.	71	29	0	0	0	4.71
Placement and Entrepreneurship Support Feedback							
19.	The university provides effective mentoring for career development.	82	18	0	0	0	4.82
20.	Placement drives are well-organized and offer quality job opportunities.	44	53	3	0	0	4.41
21.	The (Institutions Innovation Council) IIC supports student creativity (innovation) effectively.	74	26	0	0	0	4.74
22.	Entrepreneurship development activities are comprehensive and inspiring.	68	32	0	0	0	4.68
23.	The university provides excellent guidance for start-up initiatives.	68	32	0	0	0	4.68
24.	Placement support extends beyond job placement to holistic career guidance.	74	26	0	0	0	4.74
Extension Activities and Grievance Redressal Feedback							

25.	NSS, YRC, RRC activities contribute meaningfully to social awareness and development.	79	21	0	0	0	4.79
26.	Awareness programs (blood donation camp etc.,) effectively address societal challenges.	88	12	0	0	0	4.88
27.	The university actively supports government social schemes (Swatch Bharat, voter awareness, social responsibility programmes etc.).	76	24	0	0	0	4.76
28.	The university provides clear and accessible channels for reporting student grievances.	68	32	0	0	0	4.68
29.	Grievance redressal mechanisms are transparent and handled with confidentiality and fairness.	74	26	0	0	0	4.74
30.	The university demonstrates a proactive approach in resolving student concerns in a timely manner.	71	29	0	0	0	4.71

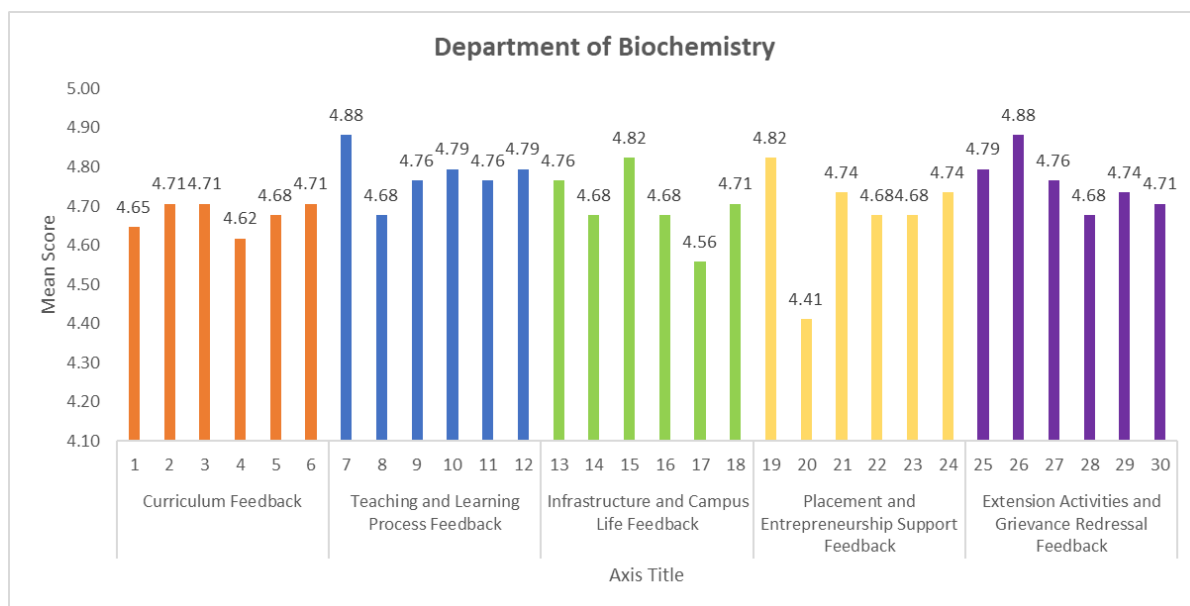


Table – : 5 Department of Bio Technology

Total Number of Students: 55

S.No.	Questions	Strongly Agree (%)	Agree (%)	Neither agree nor Disagree (%)	Disagree (%)	Strongly Disagree (%)	Mean score
Curriculum Feedback							
1.	The curriculum provides strong industry-oriented learning experiences.	57	38	5	0	0	4.51
2.	The courses effectively develop my technical skills.	47	51	2	0	0	4.45
3.	The program helps me develop essential soft skills for professional success.	49	46	5	0	0	4.44
4.	The curriculum incorporates valuable life skills and professional development opportunities.	45	49	6	0	0	4.40
5.	The courses emphasize	44	53	3	0	0	4.40

	ethical values and social responsibility.						
6.	The program offers comprehensive exposure to the Indian knowledge system.	45	55	0	0	0	4.45
Teaching and Learning Process Feedback							
7.	Faculty members demonstrate high academic and professional qualifications.	73	27	0	0	0	4.73
8.	Faculty members effectively explain complex concepts with clarity.	62	36	2	0	0	4.60
9.	Teaching methods are engaging and support diverse learning styles.	53	47	0	0	0	4.53
10.	Faculty members maintain a supportive and approachable relationship with students.	64	33	3	0	0	4.60
11.	The syllabus is comprehensive and covers all essential topics thoroughly.	33	62	5	0	0	4.27
12.	Faculty members provide adequate support for self-learning and additional exploration.	53	44	3	0	0	4.49

Infrastructure and Campus Life Feedback							
13.	Campus infrastructure supports effective learning through modern classrooms, laboratories, and advanced technological resources.	33	60	5	2	0	4.24
14.	Library facilities provide comprehensive academic and research resources for in-depth learning.	58	38	2	2	0	4.53
15.	Integrated campus services ensure student convenience, including banking, ATM, post office, canteen, and bookstore facilities.	64	27	9	0	0	4.55
16.	Health and wellness facilities offer professional medical support and comprehensive student care.	51	38	9	2	0	4.38
17.	Physical education and recreational facilities promote holistic student development and well-being.	26	58	9	7	0	4.02
18.	The campus environment enables academic, personal, and professional growth through inclusive and	45	53	2	0	0	4.44

	advanced infrastructure.						
Placement and Entrepreneurship Support Feedback							
19.	The university provides effective mentoring for career development.	44	53	3	0	0	4.40
20.	Placement drives are well-organized and offer quality job opportunities.	18	55	22	5	0	3.85
21.	The (Institutions Innovation Council) IIC supports student creativity (innovation) effectively.	53	44	3	0	0	4.49
22.	Entrepreneurship development activities are comprehensive and inspiring.	33	65	2	0	0	4.31
23.	The university provides excellent guidance for start-up initiatives.	60	33	7	0	0	4.53
24.	Placement support extends beyond job placement to holistic career guidance.	27	51	20	2	0	4.04
Extension Activities and Grievance Redressal Feedback							
25.	NSS, YRC, RRC activities contribute meaningfully to social awareness and development.	38	49	9	4	0	4.22
26.	Awareness programs (blood donation camp etc.,) effectively address societal challenges.	60	36	4	0	0	4.56

27.	The university actively supports government social schemes (Swatch Bharat, voter awareness, social responsibility programmes etc.).	45	53	2	0	0	4.44
28.	The university provides clear and accessible channels for reporting student grievances.	33	58	7	2	0	4.22
29.	Grievance redressal mechanisms are transparent and handled with confidentiality and fairness.	25	71	4	0	0	4.22
30.	The university demonstrates a proactive approach in resolving student concerns in a timely manner.	36	64	0	0	0	4.36

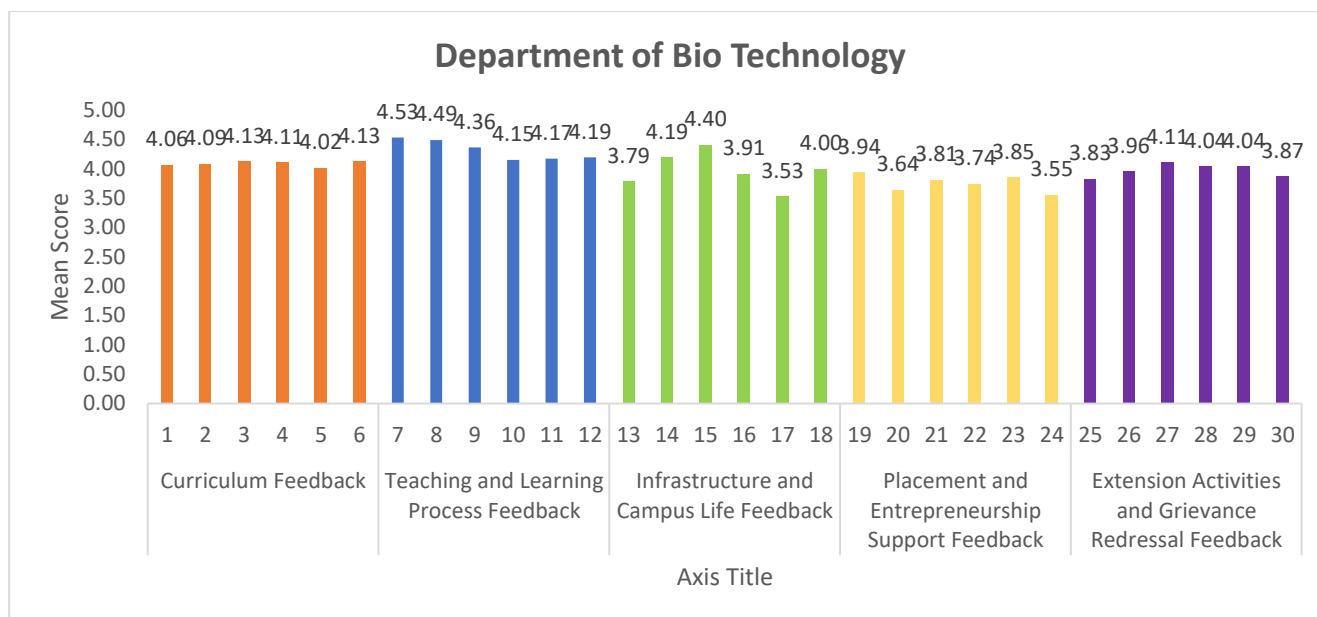


Table – 6: Department of Botany

Total Number of Students: 49

S.No.	Questions	Strongly Agree (%)	Agree (%)	Neither agree nor Disagree (%)	Disagree (%)	Strongly Disagree (%)	Mean score
Curriculum Feedback							
1.	The curriculum provides strong industry-oriented learning experiences.	39	57	0	2	2	4.29
2.	The courses effectively develop my technical skills.	39	51	4	4	2	4.20
3.	The program helps me develop essential soft skills for professional success.	43	51	4	0	2	4.33
4.	The curriculum incorporates valuable life skills and professional development opportunities.	35	59	0	2	4	4.18

5.	The courses emphasize ethical values and social responsibility.	39	47	6	6	2	4.14
6.	The program offers comprehensive exposure to the Indian knowledge system.	35	53	6	0	6	4.10
Teaching and Learning Process Feedback							
7.	Faculty members demonstrate high academic and professional qualifications.	35	59	2	0	4	4.20
8.	Faculty members effectively explain complex concepts with clarity.	41	45	10	4	0	4.22
9.	Teaching methods are engaging and support diverse learning styles.	41	51	6	0	2	4.29
10.	Faculty members maintain a supportive and approachable relationship with students.	39	43	12	4	2	4.12
11.	The syllabus is comprehensive and covers all essential topics thoroughly.	35	53	6	4	2	4.14
12.	Faculty members provide adequate support for self-learning and additional	39	47	10	4	0	4.20

	exploration.						
Infrastructure and Campus Life Feedback							
13.	Campus infrastructure supports effective learning through modern classrooms, laboratories, and advanced technological resources.	37	53	8	2	0	4.24
14.	Library facilities provide comprehensive academic and research resources for in-depth learning.	49	39	8	4	0	4.33
15.	Integrated campus services ensure student convenience, including banking, ATM, post office, canteen, and bookstore facilities.	33	61	2	4	0	4.22
16.	Health and wellness facilities offer professional medical support and comprehensive student care.	33	53	6	8	0	4.10
17.	Physical education and recreational facilities promote holistic student development and well-being.	24	51	12	8	5	3.84
18.	The campus	39	47	12	0	2	4.20

	environment enables academic, personal, and professional growth through inclusive and advanced infrastructure.						
Placement and Entrepreneurship Support Feedback							
19.	The university provides effective mentoring for career development.	25	63	10	2	0	4.10
20.	Placement drives are well-organized and offer quality job opportunities.	25	55	6	12	2	3.88
21.	The (Institutions Innovation Council) IIC supports student creativity (innovation) effectively.	35	51	10	2	2	4.14
22.	Entrepreneurship development activities are comprehensive and inspiring.	31	53	10	4	2	4.06
23.	The university provides excellent guidance for start-up initiatives.	29	57	8	6	0	4.08
24.	Placement support extends beyond job placement to holistic career guidance.	33	51	8	6	2	4.06
Extension Activities and Grievance Redressal Feedback							
25.	NSS, YRC, RRC activities contribute meaningfully to social awareness and development.	25	67	6	2	0	4.14

26.	Awareness programs (blood donation camp etc.,) effectively address societal challenges.	37	53	8	2	0	4.24
27.	The university actively supports government social schemes (Swatch Bharat, voter awareness, social responsibility programmes etc.).	35	59	4	2	0	4.27
28.	The university provides clear and accessible channels for reporting student grievances.	21	63	10	6	0	3.98
29.	Grievance redressal mechanisms are transparent and handled with confidentiality and fairness.	29	55	12	2	2	4.06
30.	The university demonstrates a proactive approach in resolving student concerns in a timely manner.	27	61	8	2	2	4.08

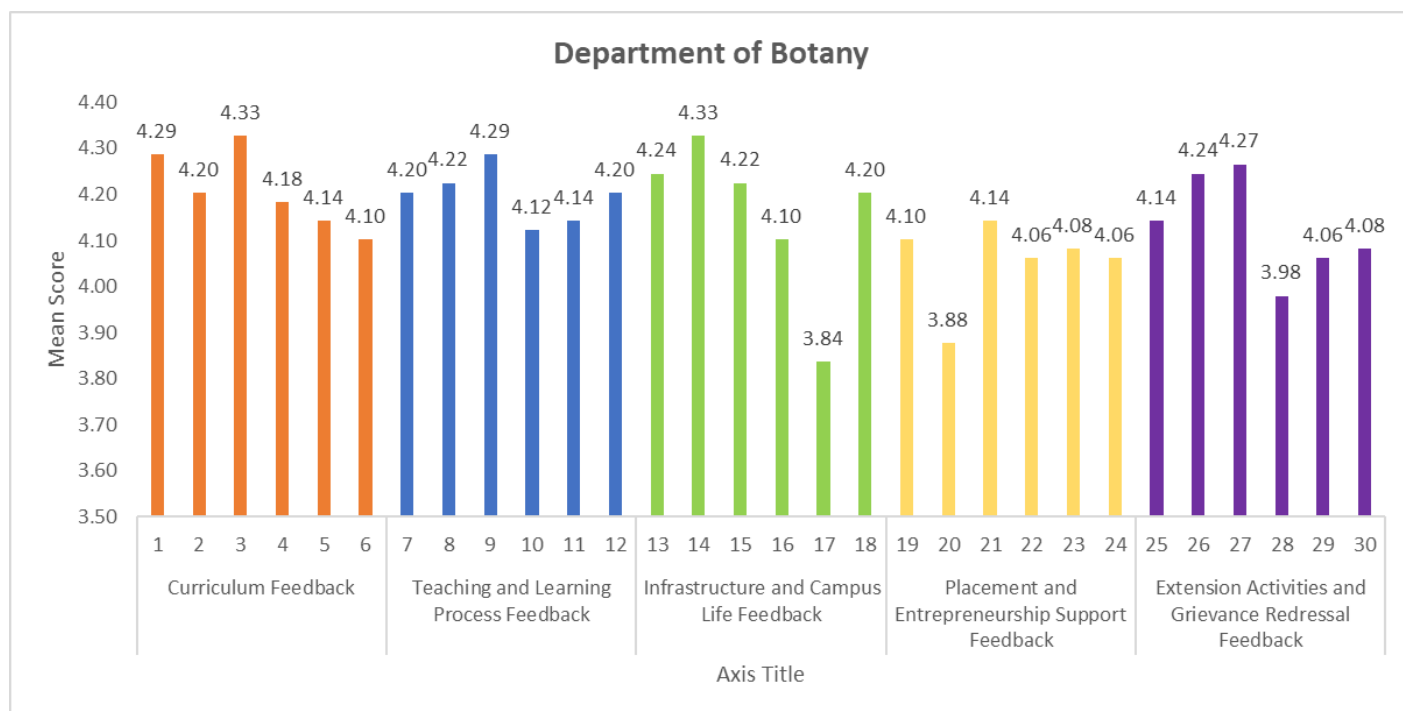


Table – 7: Department of Chemistry

Total Number of Students: 47

S.No.	Questions	Strongly Agree (%)	Agree (%)	Neither agree nor Disagree (%)	Disagree (%)	Strongly Disagree (%)	Mean score
Curriculum Feedback							
1.	The curriculum provides strong industry-oriented learning experiences.	39	57	0	2	2	4.29
2.	The courses effectively develop my technical skills.	39	51	4	4	2	4.20
3.	The program helps me develop essential soft skills for professional success.	43	51	4	0	2	4.33
4.	The curriculum incorporates valuable life skills and professional development	35	59	0	2	4	4.18

	opportunities.						
5.	The courses emphasize ethical values and social responsibility.	39	47	6	6	2	4.14
6.	The program offers comprehensive exposure to the Indian knowledge system.	35	53	6	0	6	4.10
Teaching and Learning Process Feedback							
7.	Faculty members demonstrate high academic and professional qualifications.	35	59	2	0	4	4.20
8.	Faculty members effectively explain complex concepts with clarity.	41	45	10	4	0	4.22
9.	Teaching methods are engaging and support diverse learning styles.	41	51	6	0	2	4.29
10.	Faculty members maintain a supportive and approachable relationship with students.	39	43	12	4	2	4.12
11.	The syllabus is comprehensive and covers all essential topics thoroughly.	35	53	6	4	2	4.14

12.	Faculty members provide adequate support for self-learning and additional exploration.	39	47	10	4	0	4.20
Infrastructure and Campus Life Feedback							
13.	Campus infrastructure supports effective learning through modern classrooms, laboratories, and advanced technological resources.	37	53	8	2	0	4.24
14.	Library facilities provide comprehensive academic and research resources for in-depth learning.	49	39	8	4	0	4.33
15.	Integrated campus services ensure student convenience, including banking, ATM, post office, canteen, and bookstore facilities.	33	61	2	4	0	4.22
16.	Health and wellness facilities offer professional medical support and comprehensive student care.	33	53	6	8	0	4.10
17.	Physical education and recreational facilities promote holistic student development and well-being.	24	51	12	8	4	3.84

18.	The campus environment enables academic, personal, and professional growth through inclusive and advanced infrastructure.	39	47	12	0	2	4.20
Placement and Entrepreneurship Support Feedback							
19.	The university provides effective mentoring for career development.	25	63	10	2	0	4.10
20.	Placement drives are well-organized and offer quality job opportunities.	25	55	6	12	2	3.88
21.	The (Institutions Innovation Council) IIC supports student creativity (innovation) effectively.	35	51	10	2	2	4.14
22.	Entrepreneurship development activities are comprehensive and inspiring.	31	53	10	4	2	4.06
23.	The university provides excellent guidance for start-up initiatives.	29	57	8	6	0	4.08
24.	Placement support extends beyond job placement to holistic career guidance.	33	51	8	6	2	4.06
Extension Activities and Grievance Redressal Feedback							
25.	NSS, YRC, RRC activities contribute meaningfully to social awareness and	25	67	6	2	0	4.14

	development.						
26.	Awareness programs (blood donation camp etc.) effectively address societal challenges.	37	53	8	2	0	4.24
27.	The university actively supports government social schemes (Swatch Bharat, voter awareness, social responsibility programmes etc.).	35	59	4	2	0	4.27
28.	The university provides clear and accessible channels for reporting student grievances.	21	63	10	6	0	3.98
29.	Grievance redressal mechanisms are transparent and handled with confidentiality and fairness.	29	55	12	2	2	4.06
30.	The university demonstrates a proactive approach in resolving student concerns in a timely manner.	27	61	8	2	2	4.08

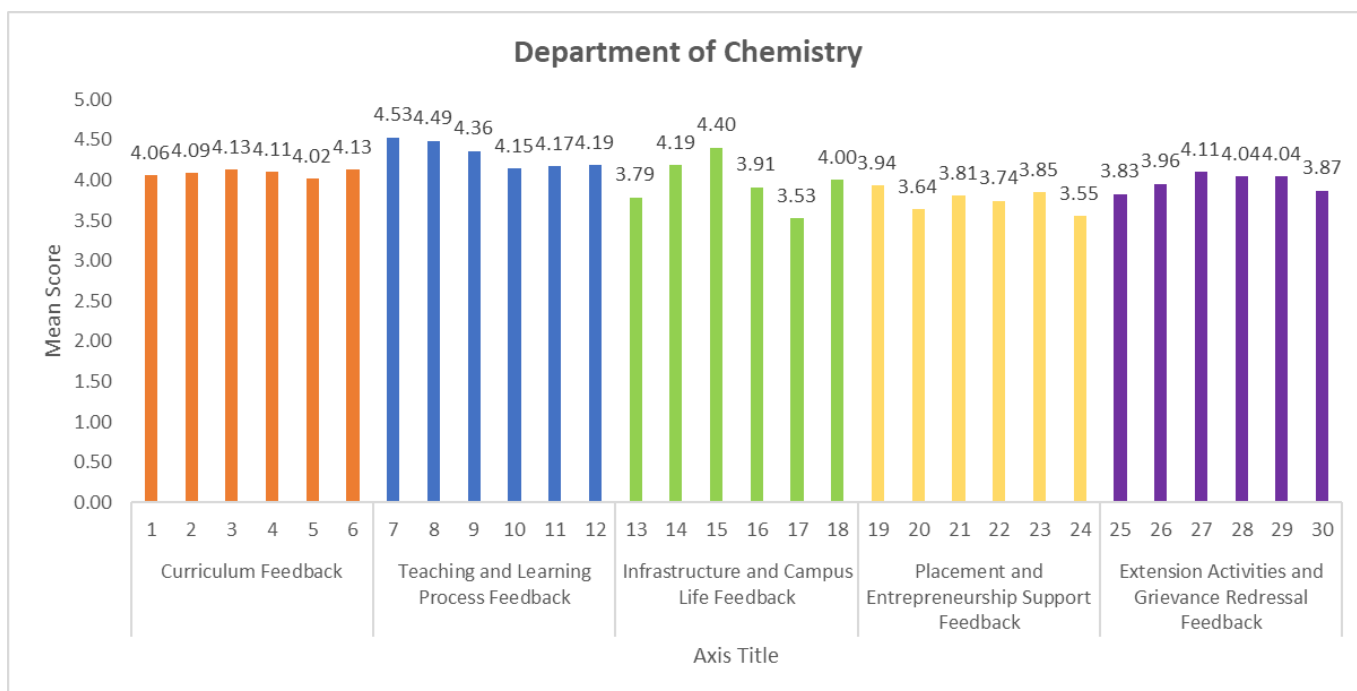


Table – 8: Department of Commerce

Total Number of Students: 62

S.No.	Questions	Strongly Agree (%)	Agree (%)	Neither agree nor Disagree (%)	Disagree (%)	Strongly Disagree (%)	Mean score
Curriculum Feedback							
1.	The curriculum provides strong industry-oriented learning experiences.	35	50	10	5	0	4.16
2.	The courses effectively develop my technical skills.	34	44	22	0	0	4.11
3.	The program helps me develop essential soft skills for professional success.	31	53	16	0	0	4.15
4.	The curriculum incorporates valuable life skills and professional development	24	50	26	0	0	3.98

	opportunities.						
5.	The courses emphasize ethical values and social responsibility.	42	45	10	0	3	4.23
6.	The program offers comprehensive exposure to the Indian knowledge system.	39	40	16	3	2	4.11
Teaching and Learning Process Feedback							
7.	Faculty members demonstrate high academic and professional qualifications.	40	52	6	0	2	4.29
8.	Faculty members effectively explain complex concepts with clarity.	35	52	8	3	2	4.16
9.	Teaching methods are engaging and support diverse learning styles.	32	52	16	0	0	4.16
10.	Faculty members maintain a supportive and approachable relationship with students.	36	50	8	3	3	4.11
11.	The syllabus is comprehensive and covers all essential topics thoroughly.	29	53	15	3	0	4.08

12.	Faculty members provide adequate support for self-learning and additional exploration.	37	55	6	2	0	4.27
Infrastructure and Campus Life Feedback							
13.	Campus infrastructure supports effective learning through modern classrooms, laboratories, and advanced technological resources.	21	29	24	16	10	3.35
14.	Library facilities provide comprehensive academic and research resources for in-depth learning.	40	44	10	3	3	4.15
15.	Integrated campus services ensure student convenience, including banking, ATM, post office, canteen, and bookstore facilities.	44	42	11	2	1	4.24
16.	Health and wellness facilities offer professional medical support and comprehensive student care.	44	34	16	3	3	4.11
17.	Physical education and recreational facilities promote holistic student development and well-being.	21	44	18	11	6	3.61

18.	The campus environment enables academic, personal, and professional growth through inclusive and advanced infrastructure.	32	45	15	8	0	4.02
Placement and Entrepreneurship Support Feedback							
19.	The university provides effective mentoring for career development.	29	48	18	5	0	4.02
20.	Placement drives are well-organized and offer quality job opportunities.	21	42	26	8	3	3.69
21.	The (Institutions Innovation Council) IIC supports student creativity (innovation) effectively.	31	40	21	8	0	3.94
22.	Entrepreneurship development activities are comprehensive and inspiring.	31	47	14	8	0	4.00
23.	The university provides excellent guidance for start-up initiatives.	37	50	10	3	0	4.21
24.	Placement support extends beyond job placement to holistic career guidance.	31	44	16	9	0	3.95
Extension Activities and Grievance Redressal Feedback							
25.	NSS, YRC, RRC activities contribute meaningfully to social awareness and	42	42	16	0	0	4.26

	development.						
26.	Awareness programs (blood donation camp etc.) effectively address societal challenges.	39	47	10	4	0	4.19
27.	The university actively supports government social schemes (Swatch Bharat, voter awareness, social responsibility programmes etc.).	35	52	13	0	0	4.23
28.	The university provides clear and accessible channels for reporting student grievances.	31	52	15	2	0	4.10
29.	Grievance redressal mechanisms are transparent and handled with confidentiality and fairness.	32	35	23	8	2	3.89
30.	The university demonstrates a proactive approach in resolving student concerns in a timely manner.	29	48	19	2	2	4.02

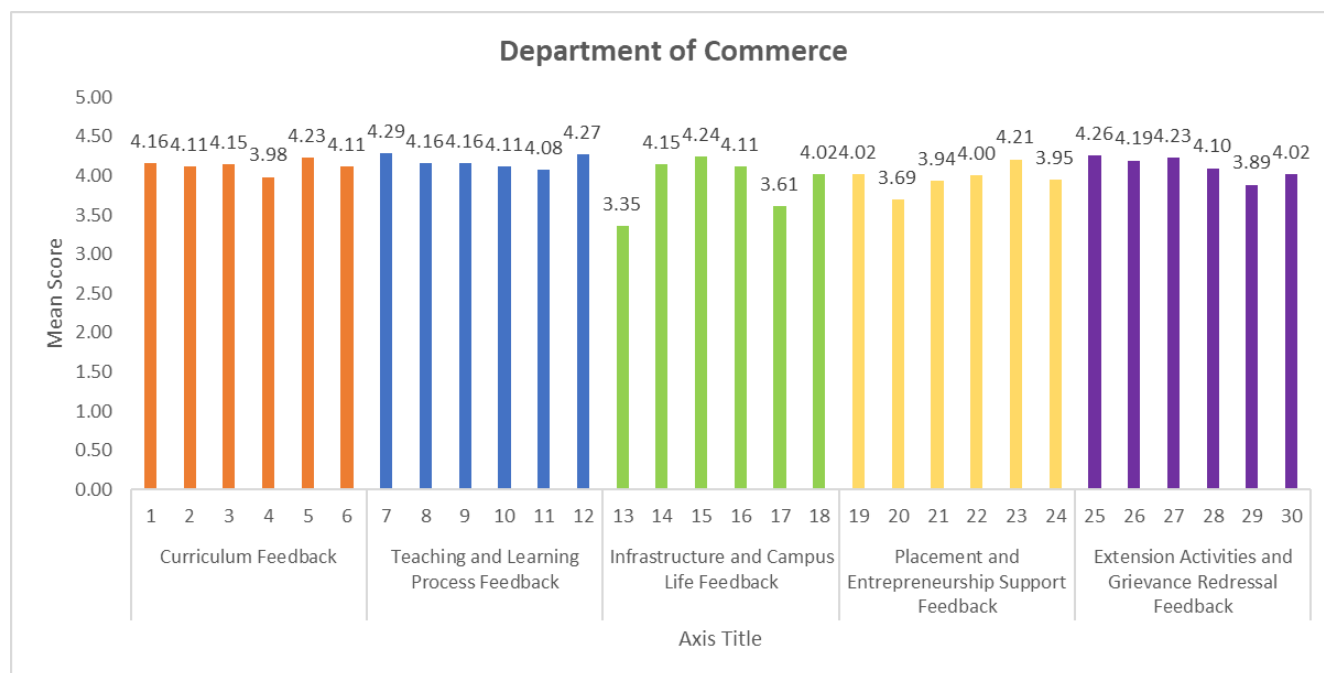


Table – 9: Department of Computer Science

Total Number of Students: 208

S.No.	Questions	Strongly Agree (%)	Agree (%)	Neither agree nor Disagree (%)	Disagree (%)	Strongly Disagree (%)	Mean score
Curriculum Feedback							
1.	The curriculum provides strong industry-oriented learning experiences.	21	67	10	2	0	4.05
2.	The courses effectively develop my technical skills.	36	52	9	2	1	4.20
3.	The program helps me develop essential soft skills for professional success.	29	58	12	1	0	4.13
4.	The curriculum incorporates valuable life skills and professional development	25	59	14	1	1	4.03

	opportunities.						
5.	The courses emphasize ethical values and social responsibility.	22	61	14	3	0	4.00
6.	The program offers comprehensive exposure to the Indian knowledge system.	30	55	12	2	1	4.10
Teaching and Learning Process Feedback							
7.	Faculty members demonstrate high academic and professional qualifications.	32	59	8	1	0	4.19
8.	Faculty members effectively explain complex concepts with clarity.	26	57	16	1	0	4.06
9.	Teaching methods are engaging and support diverse learning styles.	30	55	13	2	0	4.13
10.	Faculty members maintain a supportive and approachable relationship with students.	32	50	15	2	1	4.08
11.	The syllabus is comprehensive and covers all essential topics thoroughly.	31	54	13	2	0	4.12

12.	Faculty members provide adequate support for self-learning and additional exploration.	29	58	12	1	0	4.13
Infrastructure and Campus Life Feedback							
13.	Campus infrastructure supports effective learning through modern classrooms, laboratories, and advanced technological resources.	36	54	9	1	0	4.25
14.	Library facilities provide comprehensive academic and research resources for in-depth learning.	32	54	13	1	0	4.16
15.	Integrated campus services ensure student convenience, including banking, ATM, post office, canteen, and bookstore facilities.	40	49	9	0	2	4.25
16.	Health and wellness facilities offer professional medical support and comprehensive student care.	33	50	15	2	0	4.12
17.	Physical education and recreational facilities promote holistic student development and well-being.	21	56	16	4	3	3.88

18.	The campus environment enables academic, personal, and professional growth through inclusive and advanced infrastructure.	27	61	10	2	0	4.10
Placement and Entrepreneurship Support Feedback							
19.	The university provides effective mentoring for career development.	29	50	16	3	2	4.00
20.	Placement drives are well-organized and offer quality job opportunities.	20	48	24	5	3	3.75
21.	The (Institutions Innovation Council) IIC supports student creativity (innovation) effectively.	19	61	15	3	2	3.91
22.	Entrepreneurship development activities are comprehensive and inspiring.	20	56	19	3	2	3.89
23.	The university provides excellent guidance for start-up initiatives.	26	53	14	6	1	3.96
24.	Placement support extends beyond job placement to holistic career guidance.	21	55	17	5	2	3.87
Extension Activities and Grievance Redressal Feedback							
25.	NSS, YRC, RRC activities contribute meaningfully to social awareness and	33	51	13	2	1	4.12

	development.						
26.	Awareness programs (blood donation camp etc.) effectively address societal challenges.	39	48	11	2	0	4.22
27.	The university actively supports government social schemes (Swatch Bharat, voter awareness, social responsibility programmes etc.).	33	53	12	2	0	4.16
28.	The university provides clear and accessible channels for reporting student grievances.	25	59	13	3	0	4.06
29.	Grievance redressal mechanisms are transparent and handled with confidentiality and fairness.	25	61	13	1	0	4.09
30.	The university demonstrates a proactive approach in resolving student concerns in a timely manner.	30	57	11	1	1	4.13

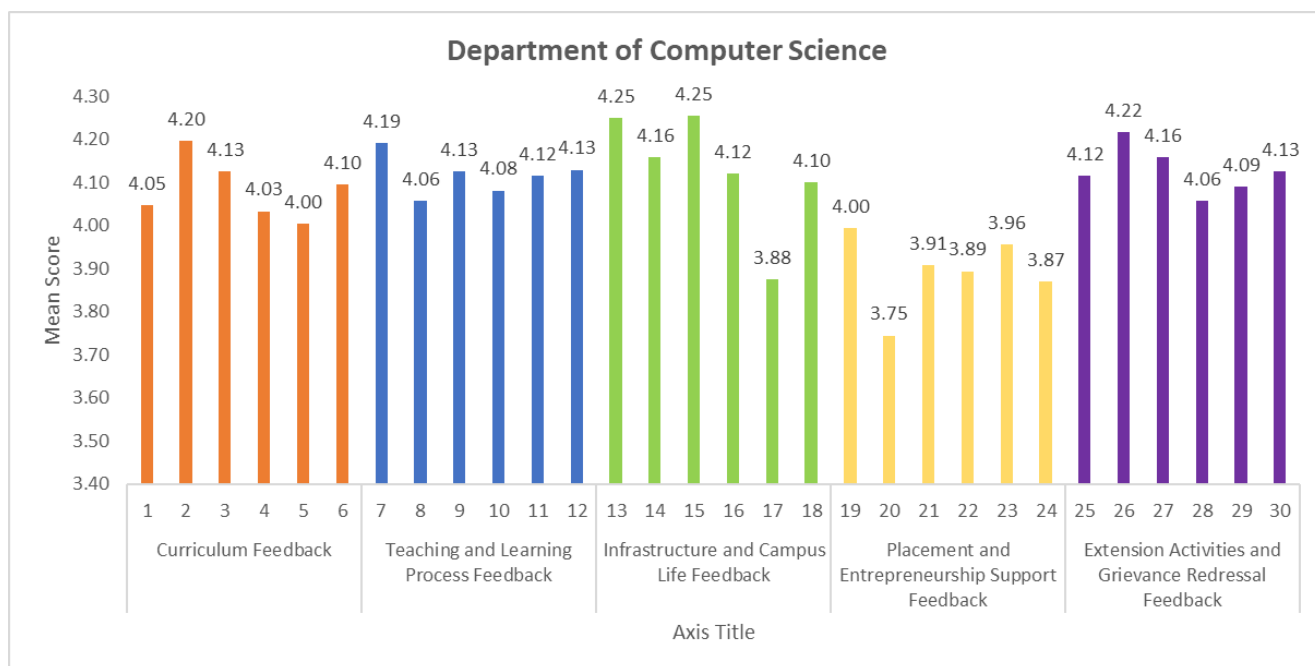


Table – 10: Department of Economics

Total Number of Students: 47

S.No.	Questions	Strongly Agree (%)	Agree (%)	Neither agree nor Disagree (%)	Disagree (%)	Strongly Disagree (%)	Mean score
Curriculum Feedback							
1.	The curriculum provides strong industry-oriented learning experiences.	15	74	11	0	0	4.04
2.	The courses effectively develop my technical skills.	19	64	6	9	2	3.89
3.	The program helps me develop essential soft skills for professional success.	22	74	0	4	0	4.13
4.	The curriculum incorporates valuable life skills and professional development	28	49	15	6	2	3.94

	opportunities.						
5.	The courses emphasize ethical values and social responsibility.	17	81	2	0	0	4.15
6.	The program offers comprehensive exposure to the Indian knowledge system.	30	66	4	0	0	4.26
Teaching and Learning Process Feedback							
7.	Faculty members demonstrate high academic and professional qualifications.	47	53	0	0	0	4.47
8.	Faculty members effectively explain complex concepts with clarity.	28	64	8	0	0	4.19
9.	Teaching methods are engaging and support diverse learning styles.	22	68	4	6	0	4.04
10.	Faculty members maintain a supportive and approachable relationship with students.	32	60	6	2	0	4.21
11.	The syllabus is comprehensive and covers all essential topics thoroughly.	23	60	17	0	0	4.06

12.	Faculty members provide adequate support for self-learning and additional exploration.	32	64	4	0	0	4.28
Infrastructure and Campus Life Feedback							
13.	Campus infrastructure supports effective learning through modern classrooms, laboratories, and advanced technological resources.	26	64	8	0	2	4.11
14.	Library facilities provide comprehensive academic and research resources for in-depth learning.	30	64	4	0	2	4.19
15.	Integrated campus services ensure student convenience, including banking, ATM, post office, canteen, and bookstore facilities.	43	51	2	4	0	4.32
16.	Health and wellness facilities offer professional medical support and comprehensive student care.	30	55	9	4	2	4.06
17.	Physical education and recreational facilities promote holistic student development and well-being.	17	73	6	2	2	4.00

18.	The campus environment enables academic, personal, and professional growth through inclusive and advanced infrastructure.	28	64	6	0	2	4.15
Placement and Entrepreneurship Support Feedback							
19.	The university provides effective mentoring for career development.	34	55	9	2	0	4.21
20.	Placement drives are well-organized and offer quality job opportunities.	23	60	11	6	0	4.00
21.	The (Institutions Innovation Council) IIC supports student creativity (innovation) effectively.	28	66	4	2	0	4.19
22.	Entrepreneurship development activities are comprehensive and inspiring.	36	58	6	0	0	4.30
23.	The university provides excellent guidance for start-up initiatives.	30	66	4	0	0	4.26
24.	Placement support extends beyond job placement to holistic career guidance.	30	60	8	2	0	4.17
Extension Activities and Grievance Redressal Feedback							
25.	NSS, YRC, RRC activities contribute meaningfully to social awareness and	43	49	8	0	0	4.34

	development.						
26.	Awareness programs (blood donation camp etc.,) effectively address societal challenges.	41	55	4	0	0	4.36
27.	The university actively supports government social schemes (Swatch Bharat, voter awareness, social responsibility programmes etc.).	34	60	6	0	0	4.28
28.	The university provides clear and accessible channels for reporting student grievances.	30	64	2	4	0	4.19
29.	Grievance redressal mechanisms are transparent and handled with confidentiality and fairness.	23	64	11	0	2	4.06
30.	The university demonstrates a proactive approach in resolving student concerns in a timely manner.	28	70	0	2	0	4.23

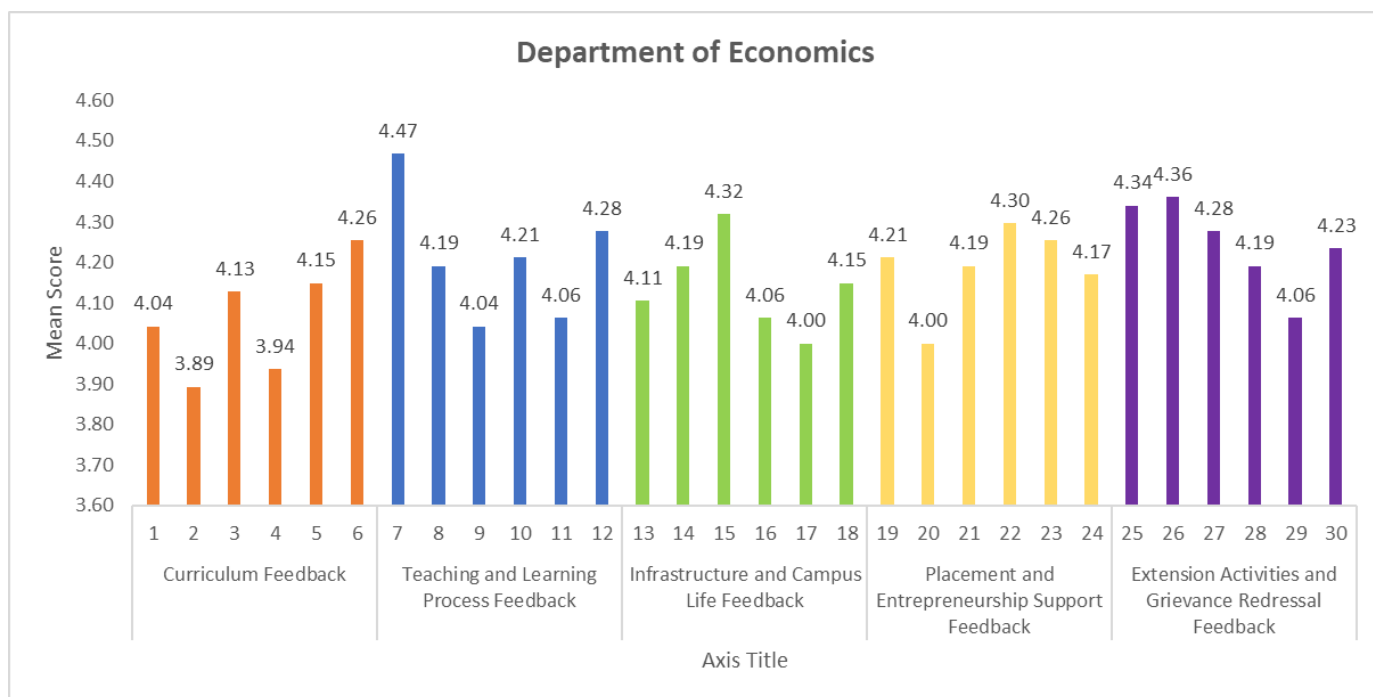


Table – 11: Department of Education

Total Number of Students: 14

S.No.	Questions	Strongly Agree (%)	Agree (%)	Neither agree nor Disagree (%)	Disagree (%)	Strongly Disagree (%)	Mean score
Curriculum Feedback							
1.	The curriculum provides strong industry-oriented learning experiences.	15	74	11	0	0	4.43
2.	The courses effectively develop my technical skills.	19	64	6	9	2	4.43
3.	The program helps me develop essential soft skills for professional success.	22	74	0	4	0	4.50
4.	The curriculum incorporates valuable life skills and professional development	28	49	15	6	2	4.36

	opportunities.						
5.	The courses emphasize ethical values and social responsibility.	17	81	2	0	0	4.36
6.	The program offers comprehensive exposure to the Indian knowledge system.	30	66	4	0	0	4.43
Teaching and Learning Process Feedback							
7.	Faculty members demonstrate high academic and professional qualifications.	47	53	0	0	0	4.57
8.	Faculty members effectively explain complex concepts with clarity.	28	64	8	0	0	4.36
9.	Teaching methods are engaging and support diverse learning styles.	22	68	4	6	0	4.36
10.	Faculty members maintain a supportive and approachable relationship with students.	32	60	6	2	0	4.43
11.	The syllabus is comprehensive and covers all essential topics thoroughly.	23	60	17	0	0	3.93

12.	Faculty members provide adequate support for self-learning and additional exploration.	32	64	4	0	0	4.29
Infrastructure and Campus Life Feedback							
13.	Campus infrastructure supports effective learning through modern classrooms, laboratories, and advanced technological resources.	26	64	8	0	2	4.14
14.	Library facilities provide comprehensive academic and research resources for in-depth learning.	30	64	4	0	2	4.50
15.	Integrated campus services ensure student convenience, including banking, ATM, post office, canteen, and bookstore facilities.	43	51	2	4	0	4.50
16.	Health and wellness facilities offer professional medical support and comprehensive student care.	30	55	9	4	2	4.07
17.	Physical education and recreational facilities promote holistic student development and well-being.	17	73	6	2	2	4.14

18.	The campus environment enables academic, personal, and professional growth through inclusive and advanced infrastructure.	28	64	6	0	2	4.14
Placement and Entrepreneurship Support Feedback							
19.	The university provides effective mentoring for career development.	34	55	9	2	0	4.50
20.	Placement drives are well-organized and offer quality job opportunities.	23	60	11	6	0	3.93
21.	The (Institutions Innovation Council) IIC supports student creativity (innovation) effectively.	28	66	4	2	0	4.14
22.	Entrepreneurship development activities are comprehensive and inspiring.	36	58	6	0	0	4.21
23.	The university provides excellent guidance for start-up initiatives.	30	66	4	0	0	4.21
24.	Placement support extends beyond job placement to holistic career guidance.	30	60	8	2	0	4.07
Extension Activities and Grievance Redressal Feedback							
25.	NSS, YRC, RRC activities contribute meaningfully to social awareness and	43	49	8	0	0	4.21

	development.						
26.	Awareness programs (blood donation camp etc.) effectively address societal challenges.	41	55	4	0	0	4.14
27.	The university actively supports government social schemes (Swatch Bharat, voter awareness, social responsibility programmes etc.).	34	60	6	0	0	4.14
28.	The university provides clear and accessible channels for reporting student grievances.	30	64	2	4	0	4.50
29.	Grievance redressal mechanisms are transparent and handled with confidentiality and fairness.	23	64	11	0	2	4.36
30.	The university demonstrates a proactive approach in resolving student concerns in a timely manner.	28	70	0	2	0	4.50

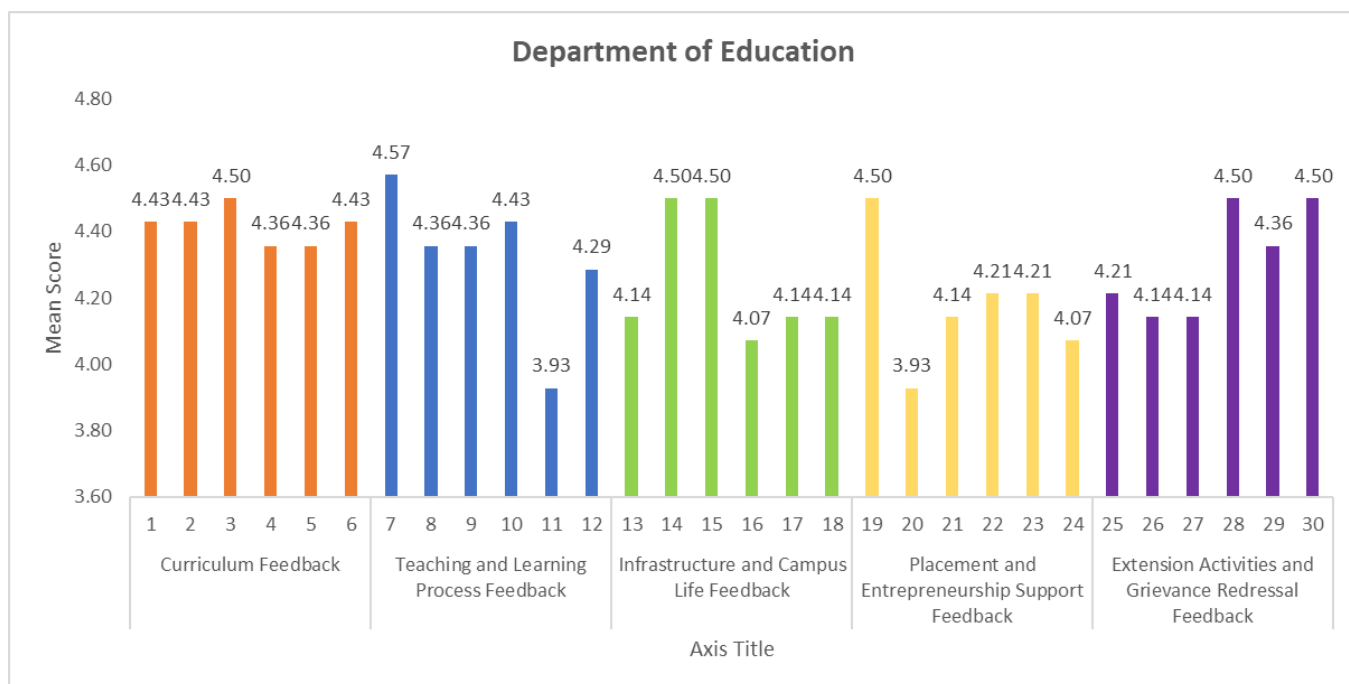


Table – 12: Department of Energy Science & Technology

Total Number of Students: 54

S.No.	Questions	Strongly Agree (%)	Agree (%)	Neither agree nor Disagree (%)	Disagree (%)	Strongly Disagree (%)	Mean score
Curriculum Feedback							
1.	The curriculum provides strong industry-oriented learning experiences.	70	26	2	0	2	4.63
2.	The courses effectively develop my technical skills.	67	28	4	0	1	4.57
3.	The program helps me develop essential soft skills for professional success.	63	31	4	0	2	4.54
4.	The curriculum incorporates valuable life skills and professional development	67	30	2	0	1	4.59

	opportunities.						
5.	The courses emphasize ethical values and social responsibility.	69	28	2	0	1	4.61
6.	The program offers comprehensive exposure to the Indian knowledge system.	63	33	2	0	2	4.56
Teaching and Learning Process Feedback							
7.	Faculty members demonstrate high academic and professional qualifications.	69	24	6	0	1	4.57
8.	Faculty members effectively explain complex concepts with clarity.	56	39	4	0	1	4.46
9.	Teaching methods are engaging and support diverse learning styles.	63	31	4	0	2	4.54
10.	Faculty members maintain a supportive and approachable relationship with students.	63	31	4	0	2	4.54
11.	The syllabus is comprehensive and covers all essential topics thoroughly.	67	28	4	0	1	4.57

12.	Faculty members provide adequate support for self-learning and additional exploration.	59	35	4	0	2	4.50
Infrastructure and Campus Life Feedback							
13.	Campus infrastructure supports effective learning through modern classrooms, laboratories, and advanced technological resources.	67	30	2	0	1	4.59
14.	Library facilities provide comprehensive academic and research resources for in-depth learning.	70	26	2	0	2	4.63
15.	Integrated campus services ensure student convenience, including banking, ATM, post office, canteen, and bookstore facilities.	70	24	4	0	2	4.61
16.	Health and wellness facilities offer professional medical support and comprehensive student care.	63	28	6	2	1	4.48
17.	Physical education and recreational facilities promote holistic student development and well-being.	67	24	7	0	2	4.54

18.	The campus environment enables academic, personal, and professional growth through inclusive and advanced infrastructure.	69	26	2	0	3	4.56
Placement and Entrepreneurship Support Feedback							
19.	The university provides effective mentoring for career development.	67	31	2	0	0	4.65
20.	Placement drives are well-organized and offer quality job opportunities.	72	24	4	0	0	4.69
21.	The (Institutions Innovation Council) IIC supports student creativity (innovation) effectively.	65	28	7	0	0	4.57
22.	Entrepreneurship development activities are comprehensive and inspiring.	63	30	7	0	0	4.56
23.	The university provides excellent guidance for start-up initiatives.	65	26	7	2	0	4.54
24.	Placement support extends beyond job placement to holistic career guidance.	69	24	7	0	0	4.61
Extension Activities and Grievance Redressal Feedback							
25.	NSS, YRC, RRC activities contribute meaningfully to social awareness and	61	28	11	0	0	4.50

	development.						
26.	Awareness programs (blood donation camp etc.,) effectively address societal challenges.	54	39	7	0	0	4.46
27.	The university actively supports government social schemes (Swatch Bharat, voter awareness, social responsibility programmes etc.).	60	33	7	0	0	4.52
28.	The university provides clear and accessible channels for reporting student grievances.	63	28	9	0	0	4.54
29.	Grievance redressal mechanisms are transparent and handled with confidentiality and fairness.	61	33	6	0	0	4.56
30.	The university demonstrates a proactive approach in resolving student concerns in a timely manner.	65	30	5	0	0	4.59

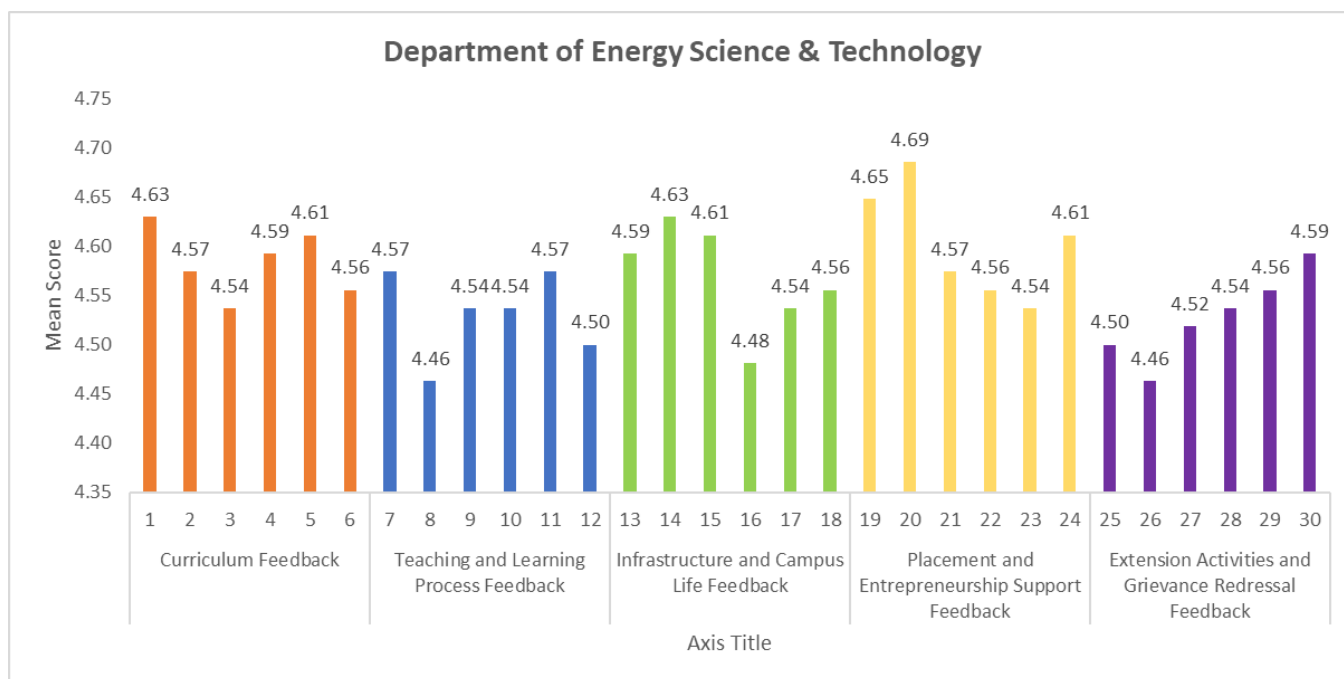


Table – 13: Department of English

Total Number of Students: 26

S.No.	Questions	Strongly Agree (%)	Agree (%)	Neither agree nor Disagree (%)	Disagree (%)	Strongly Disagree (%)	Mean score
Curriculum Feedback							
1.	The curriculum provides strong industry-oriented learning experiences.	70	26	2	0	2	3.92
2.	The courses effectively develop my technical skills.	67	28	4	0	1	4.15
3.	The program helps me develop essential soft skills for professional success.	63	31	4	0	2	4.31
4.	The curriculum incorporates valuable life skills and professional development	67	30	2	0	1	4.23

	opportunities.						
5.	The courses emphasize ethical values and social responsibility.	69	28	2	0	1	4.35
6.	The program offers comprehensive exposure to the Indian knowledge system.	63	33	2	0	2	4.15
Teaching and Learning Process Feedback							
7.	Faculty members demonstrate high academic and professional qualifications.	69	24	6	0	1	4.50
8.	Faculty members effectively explain complex concepts with clarity.	56	39	4	0	1	4.46
9.	Teaching methods are engaging and support diverse learning styles.	63	31	4	0	2	4.35
10.	Faculty members maintain a supportive and approachable relationship with students.	63	31	4	0	2	4.42
11.	The syllabus is comprehensive and covers all essential topics thoroughly.	67	28	4	0	1	4.27

12.	Faculty members provide adequate support for self-learning and additional exploration.	59	35	4	0	2	4.46
Infrastructure and Campus Life Feedback							
13.	Campus infrastructure supports effective learning through modern classrooms, laboratories, and advanced technological resources.	67	30	2	0	1	4.19
14.	Library facilities provide comprehensive academic and research resources for in-depth learning.	70	26	2	0	2	4.23
15.	Integrated campus services ensure student convenience, including banking, ATM, post office, canteen, and bookstore facilities.	70	24	4	0	2	4.19
16.	Health and wellness facilities offer professional medical support and comprehensive student care.	63	28	6	2	1	4.08
17.	Physical education and recreational facilities promote holistic student development and well-being.	67	24	7	0	2	3.73

18.	The campus environment enables academic, personal, and professional growth through inclusive and advanced infrastructure.	69	26	2	0	3	4.31
Placement and Entrepreneurship Support Feedback							
19.	The university provides effective mentoring for career development.	67	31	2	0	0	4.35
20.	Placement drives are well-organized and offer quality job opportunities.	72	24	4	0	0	4.15
21.	The (Institutions Innovation Council) IIC supports student creativity (innovation) effectively.	65	28	7	0	0	4.04
22.	Entrepreneurship development activities are comprehensive and inspiring.	63	30	7	0	0	4.04
23.	The university provides excellent guidance for start-up initiatives.	65	26	7	2	0	4.19
24.	Placement support extends beyond job placement to holistic career guidance.	69	24	7	0	0	4.12
Extension Activities and Grievance Redressal Feedback							
25.	NSS, YRC, RRC activities contribute meaningfully to social awareness and	61	28	11	0	0	4.15

	development.						
26.	Awareness programs (blood donation camp etc.,) effectively address societal challenges.	54	39	7	0	0	4.23
27.	The university actively supports government social schemes (Swatch Bharat, voter awareness, social responsibility programmes etc.).	60	33	7	0	0	4.46
28.	The university provides clear and accessible channels for reporting student grievances.	63	28	9	0	0	4.31
29.	Grievance redressal mechanisms are transparent and handled with confidentiality and fairness.	61	33	6	0	0	4.19
30.	The university demonstrates a proactive approach in resolving student concerns in a timely manner.	65	30	5	0	0	4.27

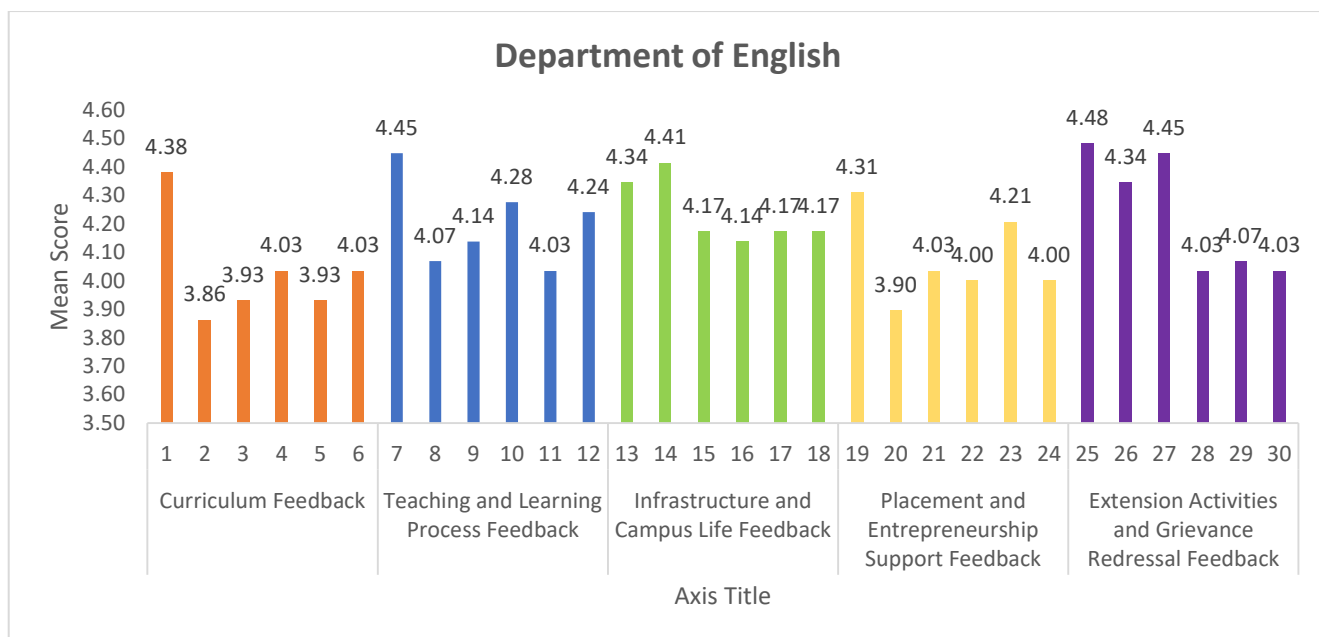


Table – 14: Department of Environmental Science

Total Number of Students: 52

S.No.	Questions	Strongly Agree (%)	Agree (%)	Neither agree nor Disagree (%)	Disagree (%)	Strongly Disagree (%)	Mean score
Curriculum Feedback							
1.	The curriculum provides strong industry-oriented learning experiences.	70	26	2	0	2	4.17
2.	The courses effectively develop my technical skills.	67	28	4	0	1	4.19
3.	The program helps me develop essential soft skills for professional success.	63	31	4	0	2	4.08
4.	The curriculum incorporates valuable life skills and professional development opportunities.	67	30	2	0	1	4.15

5.	The courses emphasize ethical values and social responsibility.	69	28	2	0	1	4.13
6.	The program offers comprehensive exposure to the Indian knowledge system.	63	33	2	0	2	4.13
Teaching and Learning Process Feedback							
7.	Faculty members demonstrate high academic and professional qualifications.	69	24	6	0	1	4.21
8.	Faculty members effectively explain complex concepts with clarity.	56	39	4	0	1	4.27
9.	Teaching methods are engaging and support diverse learning styles.	63	31	4	0	2	4.17
10.	Faculty members maintain a supportive and approachable relationship with students.	63	31	4	0	2	4.29
11.	The syllabus is comprehensive and covers all essential topics thoroughly.	67	28	4	0	1	4.10
12.	Faculty members provide adequate support for self-learning and additional	59	35	4	0	2	4.19

	exploration.						
Infrastructure and Campus Life Feedback							
13.	Campus infrastructure supports effective learning through modern classrooms, laboratories, and advanced technological resources.	67	30	2	0	1	3.83
14.	Library facilities provide comprehensive academic and research resources for in-depth learning.	70	26	2	0	2	4.10
15.	Integrated campus services ensure student convenience, including banking, ATM, post office, canteen, and bookstore facilities.	70	24	4	0	2	4.00
16.	Health and wellness facilities offer professional medical support and comprehensive student care.	63	28	6	2	1	3.94
17.	Physical education and recreational facilities promote holistic student development and well-being.	67	24	7	0	2	3.63
18.	The campus	69	26	2	0	3	4.00

	environment enables academic, personal, and professional growth through inclusive and advanced infrastructure.						
Placement and Entrepreneurship Support Feedback							
19.	The university provides effective mentoring for career development.	67	31	2	0	0	4.08
20.	Placement drives are well-organized and offer quality job opportunities.	72	24	4	0	0	3.83
21.	The (Institutions Innovation Council) IIC supports student creativity (innovation) effectively.	65	28	7	0	0	3.90
22.	Entrepreneurship development activities are comprehensive and inspiring.	63	30	7	0	0	3.92
23.	The university provides excellent guidance for start-up initiatives.	65	26	7	2	0	3.98
24.	Placement support extends beyond job placement to holistic career guidance.	69	24	7	0	0	3.90
Extension Activities and Grievance Redressal Feedback							
25.	NSS, YRC, RRC activities contribute meaningfully to social awareness and development.	61	28	11	0	0	3.92

26.	Awareness programs (blood donation camp etc.,) effectively address societal challenges.	54	39	7	0	0	3.98
27.	The university actively supports government social schemes (Swatch Bharat, voter awareness, social responsibility programmes etc.).	60	33	7	0	0	4.12
28.	The university provides clear and accessible channels for reporting student grievances.	63	28	9	0	0	4.02
29.	Grievance redressal mechanisms are transparent and handled with confidentiality and fairness.	61	33	6	0	0	4.00
30.	The university demonstrates a proactive approach in resolving student concerns in a timely manner.	65	30	5	0	0	4.00

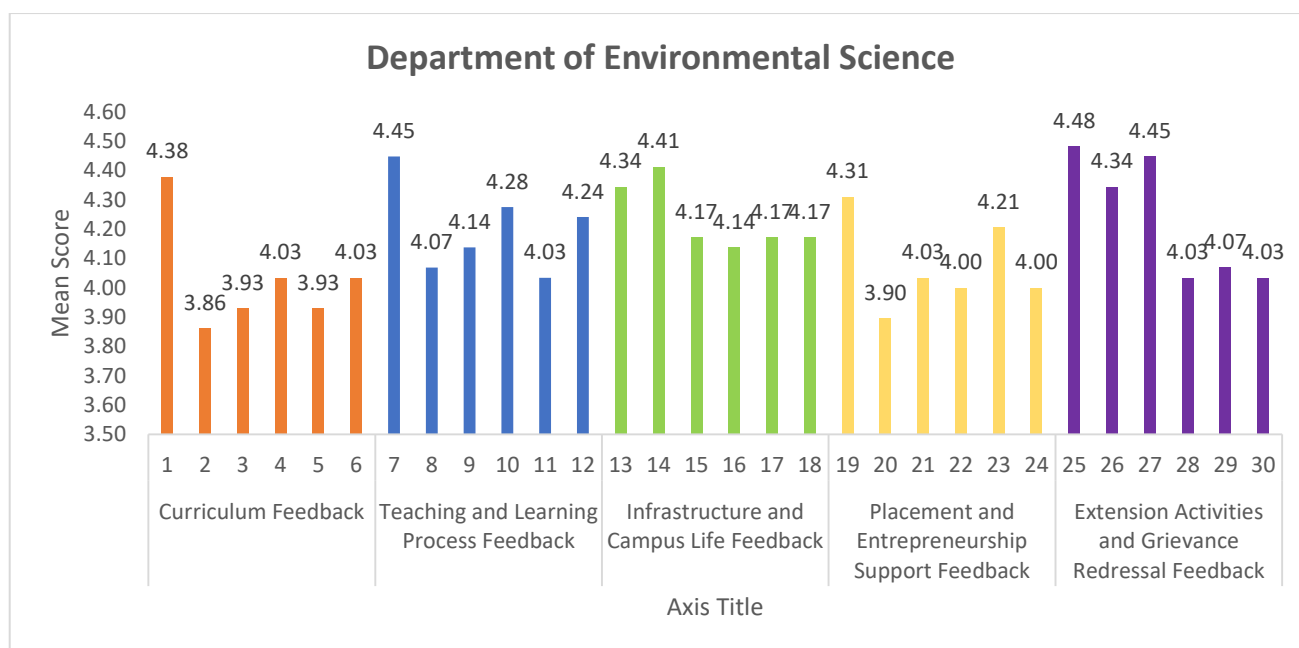


Table – 15: Department of Food Science and Nutrition

Total Number of Students: 179

S.No.	Questions	Strongly Agree (%)	Agree (%)	Neither agree nor Disagree (%)	Disagree (%)	Strongly Disagree (%)	Mean score
Curriculum Feedback							
1.	The curriculum provides strong industry-oriented learning experiences.	70	26	2	0	2	4.21
2.	The courses effectively develop my technical skills.	67	28	4	0	1	4.23
3.	The program helps me develop essential soft skills for professional success.	63	31	4	0	2	4.12
4.	The curriculum incorporates valuable life skills and professional development opportunities.	67	30	2	0	1	3.99

5.	The courses emphasize ethical values and social responsibility.	69	28	2	0	1	4.06
6.	The program offers comprehensive exposure to the Indian knowledge system.	63	33	2	0	2	4.03
Teaching and Learning Process Feedback							
7.	Faculty members demonstrate high academic and professional qualifications.	69	24	6	0	1	4.28
8.	Faculty members effectively explain complex concepts with clarity.	56	39	4	0	1	4.20
9.	Teaching methods are engaging and support diverse learning styles.	63	31	4	0	2	4.08
10.	Faculty members maintain a supportive and approachable relationship with students.	63	31	4	0	2	4.05
11.	The syllabus is comprehensive and covers all essential topics thoroughly.	67	28	4	0	1	4.05
12.	Faculty members provide adequate support for self-learning and additional	59	35	4	0	2	4.13

	exploration.						
Infrastructure and Campus Life Feedback							
13.	Campus infrastructure supports effective learning through modern classrooms, laboratories, and advanced technological resources.	67	30	2	0	1	4.20
14.	Library facilities provide comprehensive academic and research resources for in-depth learning.	70	26	2	0	2	4.22
15.	Integrated campus services ensure student convenience, including banking, ATM, post office, canteen, and bookstore facilities.	70	24	4	0	2	4.22
16.	Health and wellness facilities offer professional medical support and comprehensive student care.	63	28	6	2	1	3.97
17.	Physical education and recreational facilities promote holistic student development and well-being.	67	24	7	0	2	3.73
18.	The campus	69	26	2	0	3	4.08

	environment enables academic, personal, and professional growth through inclusive and advanced infrastructure.						
Placement and Entrepreneurship Support Feedback							
19.	The university provides effective mentoring for career development.	67	31	2	0	0	4.08
20.	Placement drives are well-organized and offer quality job opportunities.	72	24	4	0	0	3.81
21.	The (Institutions Innovation Council) IIC supports student creativity (innovation) effectively.	65	28	7	0	0	4.04
22.	Entrepreneurship development activities are comprehensive and inspiring.	63	30	7	0	0	4.06
23.	The university provides excellent guidance for startup initiatives.	65	26	7	2	0	4.11
24.	Placement support extends beyond job placement to holistic career guidance.	69	24	7	0	0	3.91
Extension Activities and Grievance Redressal Feedback							
25.	NSS, YRC, RRC activities contribute meaningfully to social awareness and development.	61	28	11	0	0	4.10

26.	Awareness programs (blood donation camp etc.,) effectively address societal challenges.	54	39	7	0	0	4.15
27.	The university actively supports government social schemes (Swatch Bharat, voter awareness, social responsibility programmes etc.).	60	33	7	0	0	4.09
28.	The university provides clear and accessible channels for reporting student grievances.	63	28	9	0	0	3.94
29.	Grievance redressal mechanisms are transparent and handled with confidentiality and fairness.	61	33	6	0	0	3.89
30.	The university demonstrates a proactive approach in resolving student concerns in a timely manner.	65	30	5	0	0	3.96

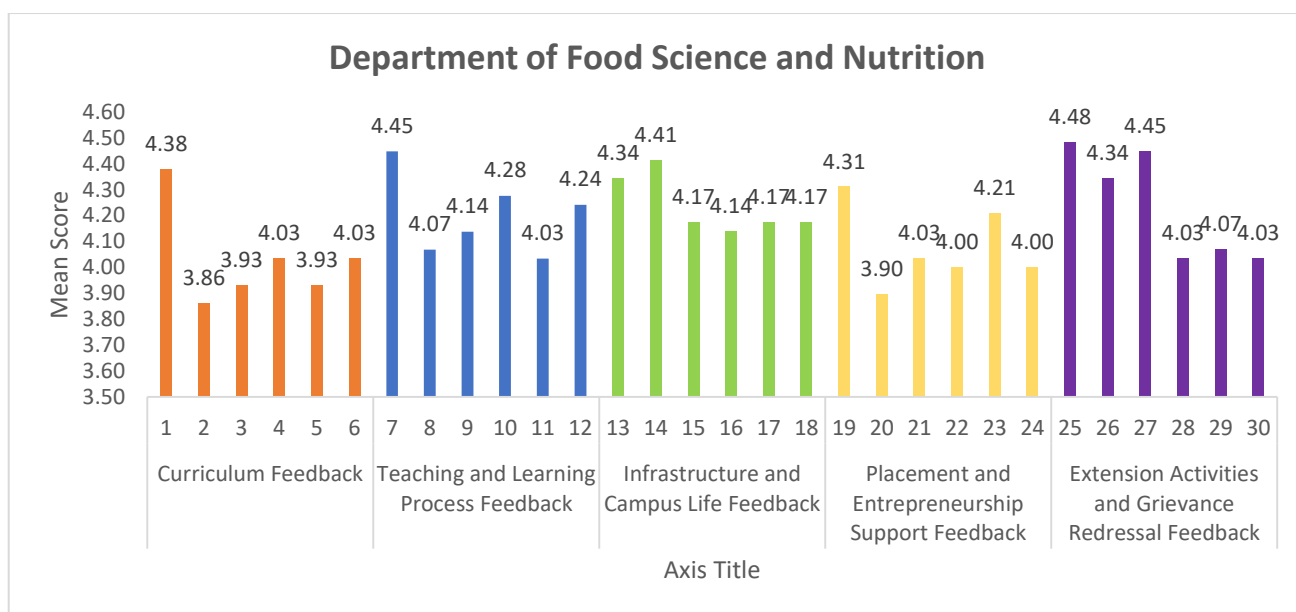


Table – 16: Department of Geology

Total Number of Students: 51

S.No.	Questions	Strongly Agree (%)	Agree (%)	Neither agree nor Disagree (%)	Disagree (%)	Strongly Disagree (%)	Mean score
Curriculum Feedback							
1.	The curriculum provides strong industry-oriented learning experiences.	70	26	2	0	2	4.20
2.	The courses effectively develop my technical skills.	67	28	4	0	1	4.27
3.	The program helps me develop essential soft skills for professional success.	63	31	4	0	2	4.06
4.	The curriculum incorporates valuable life skills and professional development opportunities.	67	30	2	0	1	4.02

5.	The courses emphasize ethical values and social responsibility.	69	28	2	0	1	4.20
6.	The program offers comprehensive exposure to the Indian knowledge system.	63	33	2	0	2	4.08
Teaching and Learning Process Feedback							
7.	Faculty members demonstrate high academic and professional qualifications.	69	24	6	0	1	4.29
8.	Faculty members effectively explain complex concepts with clarity.	56	39	4	0	1	4.16
9.	Teaching methods are engaging and support diverse learning styles.	63	31	4	0	2	3.98
10.	Faculty members maintain a supportive and approachable relationship with students.	63	31	4	0	2	4.24
11.	The syllabus is comprehensive and covers all essential topics thoroughly.	67	28	4	0	1	4.08
12.	Faculty members provide adequate support for self-learning and additional	59	35	4	0	2	4.10

	exploration.						
Infrastructure and Campus Life Feedback							
13.	Campus infrastructure supports effective learning through modern classrooms, laboratories, and advanced technological resources.	67	30	2	0	1	3.88
14.	Library facilities provide comprehensive academic and research resources for in-depth learning.	70	26	2	0	2	4.12
15.	Integrated campus services ensure student convenience, including banking, ATM, post office, canteen, and bookstore facilities.	70	24	4	0	2	4.25
16.	Health and wellness facilities offer professional medical support and comprehensive student care.	63	28	6	2	1	4.10
17.	Physical education and recreational facilities promote holistic student development and well-being.	67	24	7	0	2	3.82
18.	The campus	69	26	2	0	3	4.08

	environment enables academic, personal, and professional growth through inclusive and advanced infrastructure.						
Placement and Entrepreneurship Support Feedback							
19.	The university provides effective mentoring for career development.	67	31	2	0	0	4.06
20.	Placement drives are well-organized and offer quality job opportunities.	72	24	4	0	0	3.67
21.	The (Institutions Innovation Council) IIC supports student creativity (innovation) effectively.	65	28	7	0	0	3.86
22.	Entrepreneurship development activities are comprehensive and inspiring.	63	30	7	0	0	3.98
23.	The university provides excellent guidance for start-up initiatives.	65	26	7	2	0	3.94
24.	Placement support extends beyond job placement to holistic career guidance.	69	24	7	0	0	3.98
Extension Activities and Grievance Redressal Feedback							
25.	NSS, YRC, RRC activities contribute meaningfully to social awareness and development.	61	28	11	0	0	4.02

26.	Awareness programs (blood donation camp etc.,) effectively address societal challenges.	54	39	7	0	0	4.16
27.	The university actively supports government social schemes (Swatch Bharat, voter awareness, social responsibility programmes etc.).	60	33	7	0	0	4.14
28.	The university provides clear and accessible channels for reporting student grievances.	63	28	9	0	0	4.02
29.	Grievance redressal mechanisms are transparent and handled with confidentiality and fairness.	61	33	6	0	0	4.04
30.	The university demonstrates a proactive approach in resolving student concerns in a timely manner.	65	30	5	0	0	4.10

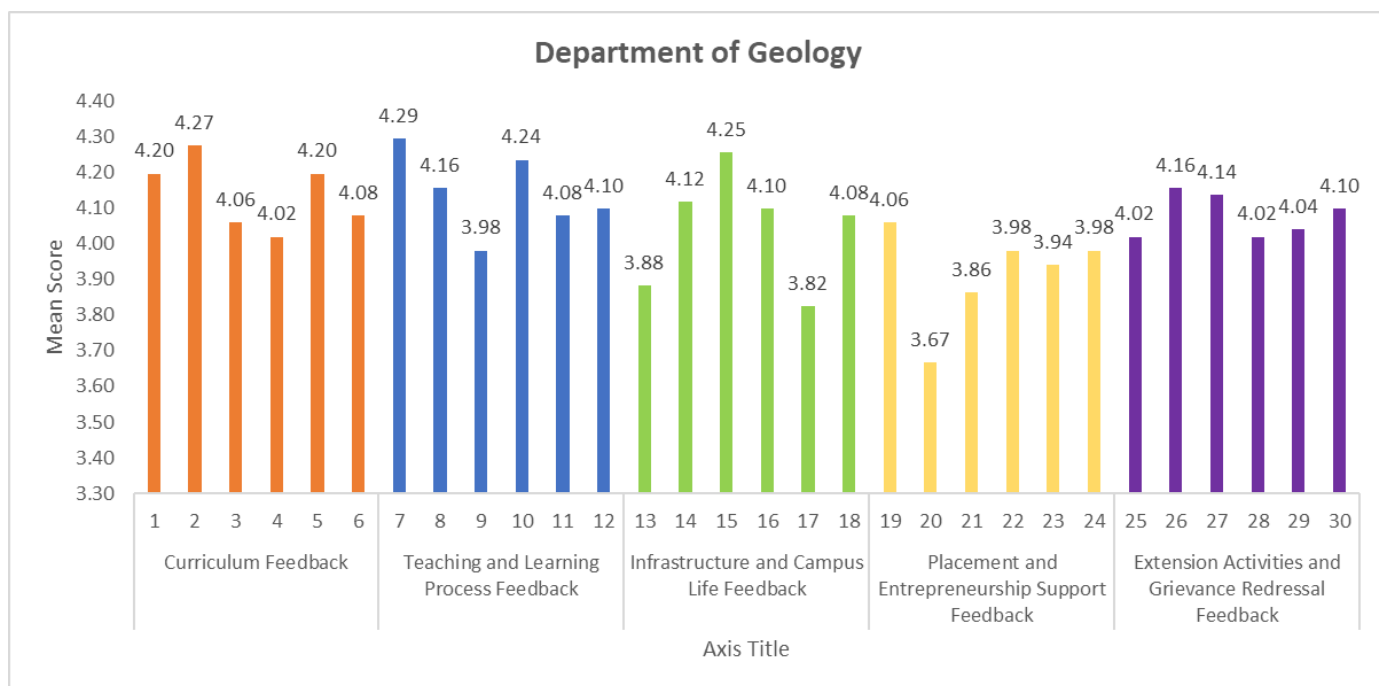


Table – 17: Department of History

Total Number of Students: 29

S.No.	Questions	Strongly Agree (%)	Agree (%)	Neither agree nor Disagree (%)	Disagree (%)	Strongly Disagree (%)	Mean score
Curriculum Feedback							
1.	The curriculum provides strong industry-oriented learning experiences.	70	26	2	0	2	4.38
2.	The courses effectively develop my technical skills.	67	28	4	0	1	3.86
3.	The program helps me develop essential soft skills for professional success.	63	31	4	0	2	3.93
4.	The curriculum incorporates valuable life skills and professional development	67	30	2	0	1	4.03

	opportunities.						
5.	The courses emphasize ethical values and social responsibility.	69	28	2	0	1	3.93
6.	The program offers comprehensive exposure to the Indian knowledge system.	63	33	2	0	2	4.03
Teaching and Learning Process Feedback							
7.	Faculty members demonstrate high academic and professional qualifications.	69	24	6	0	1	4.45
8.	Faculty members effectively explain complex concepts with clarity.	56	39	4	0	1	4.07
9.	Teaching methods are engaging and support diverse learning styles.	63	31	4	0	2	4.14
10.	Faculty members maintain a supportive and approachable relationship with students.	63	31	4	0	2	4.28
11.	The syllabus is comprehensive and covers all essential topics thoroughly.	67	28	4	0	1	4.03

12.	Faculty members provide adequate support for self-learning and additional exploration.	59	35	4	0	2	4.24
Infrastructure and Campus Life Feedback							
13.	Campus infrastructure supports effective learning through modern classrooms, laboratories, and advanced technological resources.	67	30	2	0	1	4.34
14.	Library facilities provide comprehensive academic and research resources for in-depth learning.	70	26	2	0	2	4.41
15.	Integrated campus services ensure student convenience, including banking, ATM, post office, canteen, and bookstore facilities.	70	24	4	0	2	4.17
16.	Health and wellness facilities offer professional medical support and comprehensive student care.	63	28	6	2	1	4.14
17.	Physical education and recreational facilities promote holistic student development and well-being.	67	24	7	0	2	4.17

18.	The campus environment enables academic, personal, and professional growth through inclusive and advanced infrastructure.	69	26	2	0	3	4.17
Placement and Entrepreneurship Support Feedback							
19.	The university provides effective mentoring for career development.	67	31	2	0	0	4.31
20.	Placement drives are well-organized and offer quality job opportunities.	72	24	4	0	0	3.90
21.	The (Institutions Innovation Council) IIC supports student creativity (innovation) effectively.	65	28	7	0	0	4.03
22.	Entrepreneurship development activities are comprehensive and inspiring.	63	30	7	0	0	4.00
23.	The university provides excellent guidance for start-up initiatives.	65	26	7	2	0	4.21
24.	Placement support extends beyond job placement to holistic career guidance.	69	24	7	0	0	4.00
Extension Activities and Grievance Redressal Feedback							
25.	NSS, YRC, RRC activities contribute meaningfully to social awareness and	61	28	11	0	0	4.48

	development.						
26.	Awareness programs (blood donation camp etc.,) effectively address societal challenges.	54	39	7	0	0	4.34
27.	The university actively supports government social schemes (Swatch Bharat, voter awareness, social responsibility programmes etc.).	60	33	7	0	0	4.45
28.	The university provides clear and accessible channels for reporting student grievances.	63	28	9	0	0	4.03
29.	Grievance redressal mechanisms are transparent and handled with confidentiality and fairness.	61	33	6	0	0	4.07
30.	The university demonstrates a proactive approach in resolving student concerns in a timely manner.	65	30	5	0	0	4.03

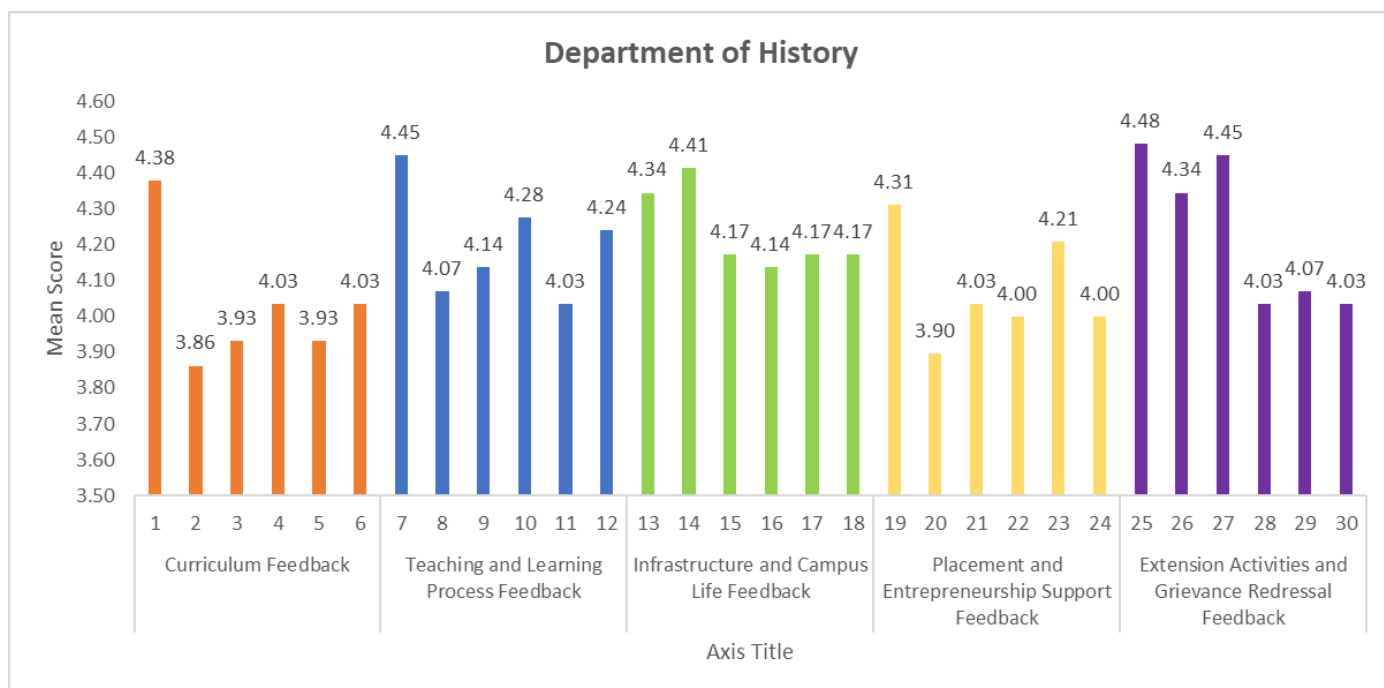


Table – 18: Department of Journalism and Mass Communication

Total Number of Students: 61

S.No.	Questions	Strongly Agree (%)	Agree (%)	Neither agree nor Disagree (%)	Disagree (%)	Strongly Disagree (%)	Mean score
Curriculum Feedback							
1.	The curriculum provides strong industry-oriented learning experiences.	70	26	2	0	2	4.00
2.	The courses effectively develop my technical skills.	67	28	4	0	1	4.07
3.	The program helps me develop essential soft skills for professional success.	63	31	4	0	2	4.08
4.	The curriculum incorporates valuable life skills and professional development	67	30	2	0	1	3.85

	opportunities.						
5.	The courses emphasize ethical values and social responsibility.	69	28	2	0	1	3.82
6.	The program offers comprehensive exposure to the Indian knowledge system.	63	33	2	0	2	3.93
Teaching and Learning Process Feedback							
7.	Faculty members demonstrate high academic and professional qualifications.	69	24	6	0	1	3.93
8.	Faculty members effectively explain complex concepts with clarity.	56	39	4	0	1	3.97
9.	Teaching methods are engaging and support diverse learning styles.	63	31	4	0	2	3.79
10.	Faculty members maintain a supportive and approachable relationship with students.	63	31	4	0	2	4.07
11.	The syllabus is comprehensive and covers all essential topics thoroughly.	67	28	4	0	1	3.82

12.	Faculty members provide adequate support for self-learning and additional exploration.	59	35	4	0	2	4.00
Infrastructure and Campus Life Feedback							
13.	Campus infrastructure supports effective learning through modern classrooms, laboratories, and advanced technological resources.	67	30	2	0	1	3.75
14.	Library facilities provide comprehensive academic and research resources for in-depth learning.	70	26	2	0	2	4.05
15.	Integrated campus services ensure student convenience, including banking, ATM, post office, canteen, and bookstore facilities.	70	24	4	0	2	3.70
16.	Health and wellness facilities offer professional medical support and comprehensive student care.	63	28	6	2	1	3.54
17.	Physical education and recreational facilities promote holistic student development and well-being.	67	24	7	0	2	3.39

18.	The campus environment enables academic, personal, and professional growth through inclusive and advanced infrastructure.	69	26	2	0	3	3.66
Placement and Entrepreneurship Support Feedback							
19.	The university provides effective mentoring for career development.	67	31	2	0	0	3.62
20.	Placement drives are well-organized and offer quality job opportunities.	72	24	4	0	0	3.59
21.	The (Institutions Innovation Council) IIC supports student creativity (innovation) effectively.	65	28	7	0	0	3.77
22.	Entrepreneurship development activities are comprehensive and inspiring.	63	30	7	0	0	3.66
23.	The university provides excellent guidance for start-up initiatives.	65	26	7	2	0	3.97
24.	Placement support extends beyond job placement to holistic career guidance.	69	24	7	0	0	3.62
Extension Activities and Grievance Redressal Feedback							
25.	NSS, YRC, RRC activities contribute meaningfully to social awareness and	61	28	11	0	0	3.87

	development.						
26.	Awareness programs (blood donation camp etc.,) effectively address societal challenges.	54	39	7	0	0	3.82
27.	The university actively supports government social schemes (Swatch Bharat, voter awareness, social responsibility programmes etc.).	60	33	7	0	0	3.72
28.	The university provides clear and accessible channels for reporting student grievances.	63	28	9	0	0	3.70
29.	Grievance redressal mechanisms are transparent and handled with confidentiality and fairness.	61	33	6	0	0	3.52
30.	The university demonstrates a proactive approach in resolving student concerns in a timely manner.	65	30	5	0	0	3.75

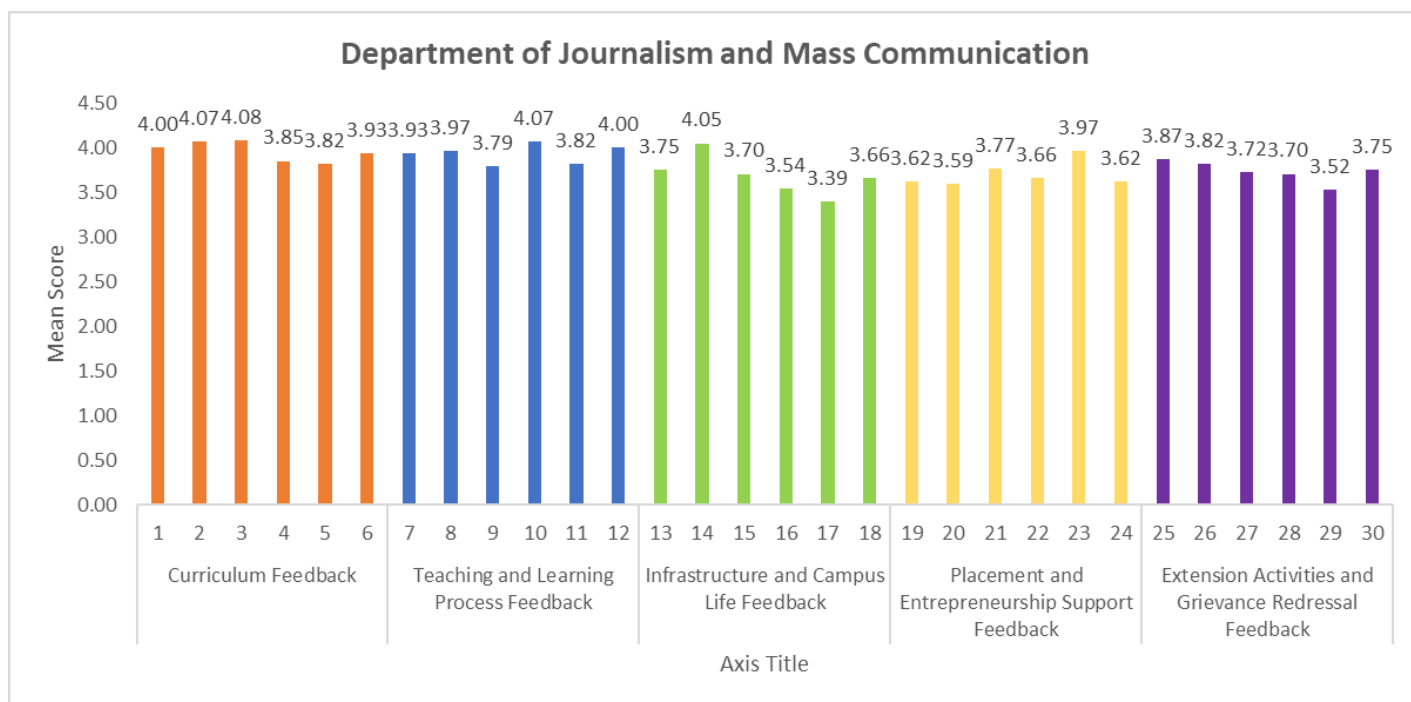


Table – 19: Department of Library and Information Science

Total Number of Students: 11

S.No.	Questions	Strongly Agree (%)	Agree (%)	Neither agree nor Disagree (%)	Disagree (%)	Strongly Disagree (%)	Mean score
Curriculum Feedback							
1.	The curriculum provides strong industry-oriented learning experiences.	70	26	2	0	2	4.45
2.	The courses effectively develop my technical skills.	67	28	4	0	1	4.45
3.	The program helps me develop essential soft skills for professional success.	63	31	4	0	2	4.82
4.	The curriculum incorporates valuable life skills and professional development	67	30	2	0	1	4.45

	opportunities.						
5.	The courses emphasize ethical values and social responsibility.	69	28	2	0	1	4.36
6.	The program offers comprehensive exposure to the Indian knowledge system.	63	33	2	0	2	4.73
Teaching and Learning Process Feedback							
7.	Faculty members demonstrate high academic and professional qualifications.	69	24	6	0	1	4.82
8.	Faculty members effectively explain complex concepts with clarity.	56	39	4	0	1	4.64
9.	Teaching methods are engaging and support diverse learning styles.	63	31	4	0	2	4.64
10.	Faculty members maintain a supportive and approachable relationship with students.	63	31	4	0	2	4.64
11.	The syllabus is comprehensive and covers all essential topics thoroughly.	67	28	4	0	1	4.73

12.	Faculty members provide adequate support for self-learning and additional exploration.	59	35	4	0	2	4.73
Infrastructure and Campus Life Feedback							
13.	Campus infrastructure supports effective learning through modern classrooms, laboratories, and advanced technological resources.	67	30	2	0	1	4.18
14.	Library facilities provide comprehensive academic and research resources for in-depth learning.	70	26	2	0	2	4.55
15.	Integrated campus services ensure student convenience, including banking, ATM, post office, canteen, and bookstore facilities.	70	24	4	0	2	4.00
16.	Health and wellness facilities offer professional medical support and comprehensive student care.	63	28	6	2	1	4.00
17.	Physical education and recreational facilities promote holistic student development and well-being.	67	24	7	0	2	4.00

18.	The campus environment enables academic, personal, and professional growth through inclusive and advanced infrastructure.	69	26	2	0	3	4.27
Placement and Entrepreneurship Support Feedback							
19.	The university provides effective mentoring for career development.	67	31	2	0	0	4.45
20.	Placement drives are well-organized and offer quality job opportunities.	72	24	4	0	0	4.55
21.	The (Institutions Innovation Council) IIC supports student creativity (innovation) effectively.	65	28	7	0	0	4.09
22.	Entrepreneurship development activities are comprehensive and inspiring.	63	30	7	0	0	4.09
23.	The university provides excellent guidance for start-up initiatives.	65	26	7	2	0	4.36
24.	Placement support extends beyond job placement to holistic career guidance.	69	24	7	0	0	4.36
Extension Activities and Grievance Redressal Feedback							
25.	NSS, YRC, RRC activities contribute meaningfully to social awareness and	61	28	11	0	0	4.64

	development.						
26.	Awareness programs (blood donation camp etc.,) effectively address societal challenges.	54	39	7	0	0	4.45
27.	The university actively supports government social schemes (Swatch Bharat, voter awareness, social responsibility programmes etc.).	60	33	7	0	0	4.45
28.	The university provides clear and accessible channels for reporting student grievances.	63	28	9	0	0	4.18
29.	Grievance redressal mechanisms are transparent and handled with confidentiality and fairness.	61	33	6	0	0	4.27
30.	The university demonstrates a proactive approach in resolving student concerns in a timely manner.	65	30	5	0	0	4.55

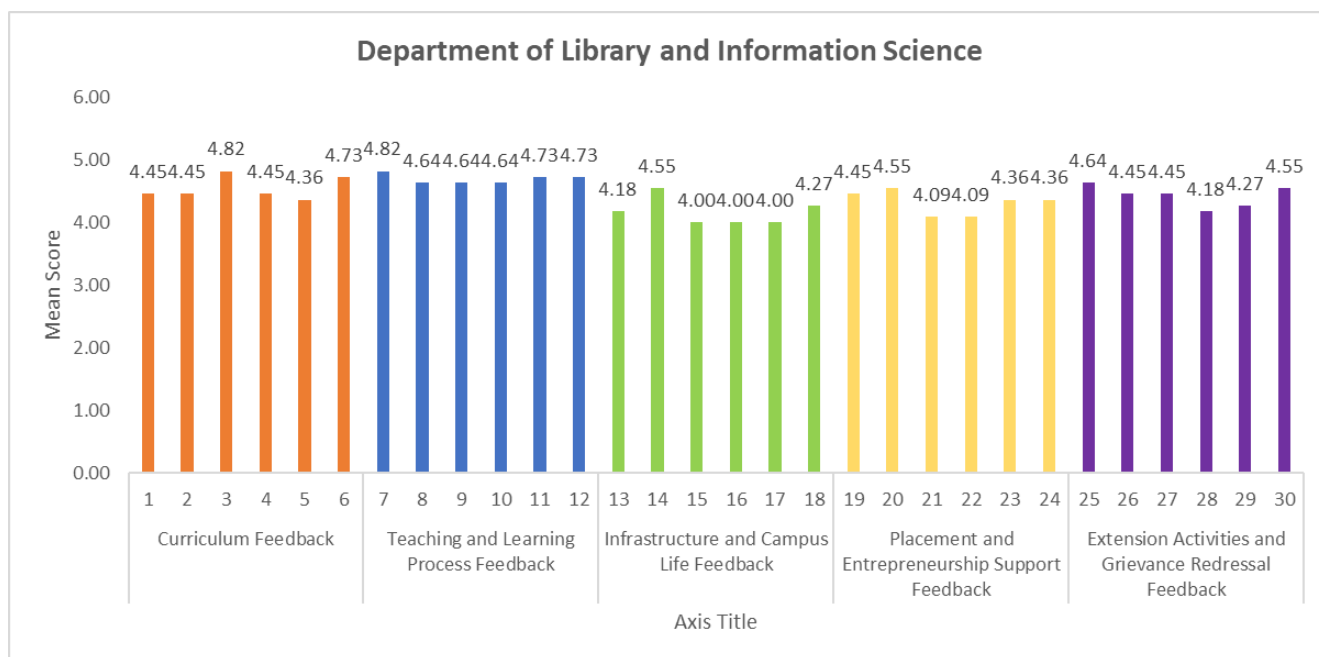


Table – 20: Department of Management Studies

Total Number of Students: 75

S.No.	Questions	Strongly Agree (%)	Agree (%)	Neither agree nor Disagree (%)	Disagree (%)	Strongly Disagree (%)	Mean score
Curriculum Feedback							
1.	The curriculum provides strong industry-oriented learning experiences.	70	26	2	0	2	4.31
2.	The courses effectively develop my technical skills.	67	28	4	0	1	4.28
3.	The program helps me develop essential soft skills for professional success.	63	31	4	0	2	4.47
4.	The curriculum incorporates valuable life skills and professional development opportunities.	67	30	2	0	1	4.37

5.	The courses emphasize ethical values and social responsibility.	69	28	2	0	1	4.45
6.	The program offers comprehensive exposure to the Indian knowledge system.	63	33	2	0	2	4.25
Teaching and Learning Process Feedback							
7.	Faculty members demonstrate high academic and professional qualifications.	69	24	6	0	1	4.61
8.	Faculty members effectively explain complex concepts with clarity.	56	39	4	0	1	4.53
9.	Teaching methods are engaging and support diverse learning styles.	63	31	4	0	2	4.47
10.	Faculty members maintain a supportive and approachable relationship with students.	63	31	4	0	2	4.45
11.	The syllabus is comprehensive and covers all essential topics thoroughly.	67	28	4	0	1	4.32
12.	Faculty members provide adequate support for self-learning and additional	59	35	4	0	2	4.32

	exploration.						
Infrastructure and Campus Life Feedback							
13.	Campus infrastructure supports effective learning through modern classrooms, laboratories, and advanced technological resources.	67	30	2	0	1	4.09
14.	Library facilities provide comprehensive academic and research resources for in-depth learning.	70	26	2	0	2	4.43
15.	Integrated campus services ensure student convenience, including banking, ATM, post office, canteen, and bookstore facilities.	70	24	4	0	2	4.31
16.	Health and wellness facilities offer professional medical support and comprehensive student care.	63	28	6	2	1	4.13
17.	Physical education and recreational facilities promote holistic student development and well-being.	67	24	7	0	2	3.97
18.	The campus	69	26	2	0	3	4.21

	environment enables academic, personal, and professional growth through inclusive and advanced infrastructure.						
Placement and Entrepreneurship Support Feedback							
19.	The university provides effective mentoring for career development.	67	31	2	0	0	4.40
20.	Placement drives are well-organized and offer quality job opportunities.	72	24	4	0	0	3.91
21.	The (Institutions Innovation Council) IIC supports student creativity (innovation) effectively.	65	28	7	0	0	4.35
22.	Entrepreneurship development activities are comprehensive and inspiring.	63	30	7	0	0	4.39
23.	The university provides excellent guidance for start-up initiatives.	65	26	7	2	0	4.37
24.	Placement support extends beyond job placement to holistic career guidance.	69	24	7	0	0	4.08
Extension Activities and Grievance Redressal Feedback							
25.	NSS, YRC, RRC activities contribute meaningfully to social awareness and development.	61	28	11	0	0	4.07

26.	Awareness programs (blood donation camp etc.,) effectively address societal challenges.	54	39	7	0	0	4.24
27.	The university actively supports government social schemes (Swatch Bharat, voter awareness, social responsibility programmes etc.).	60	33	7	0	0	4.40
28.	The university provides clear and accessible channels for reporting student grievances.	63	28	9	0	0	4.15
29.	Grievance redressal mechanisms are transparent and handled with confidentiality and fairness.	61	33	6	0	0	4.05
30.	The university demonstrates a proactive approach in resolving student concerns in a timely manner.	65	30	5	0	0	4.27

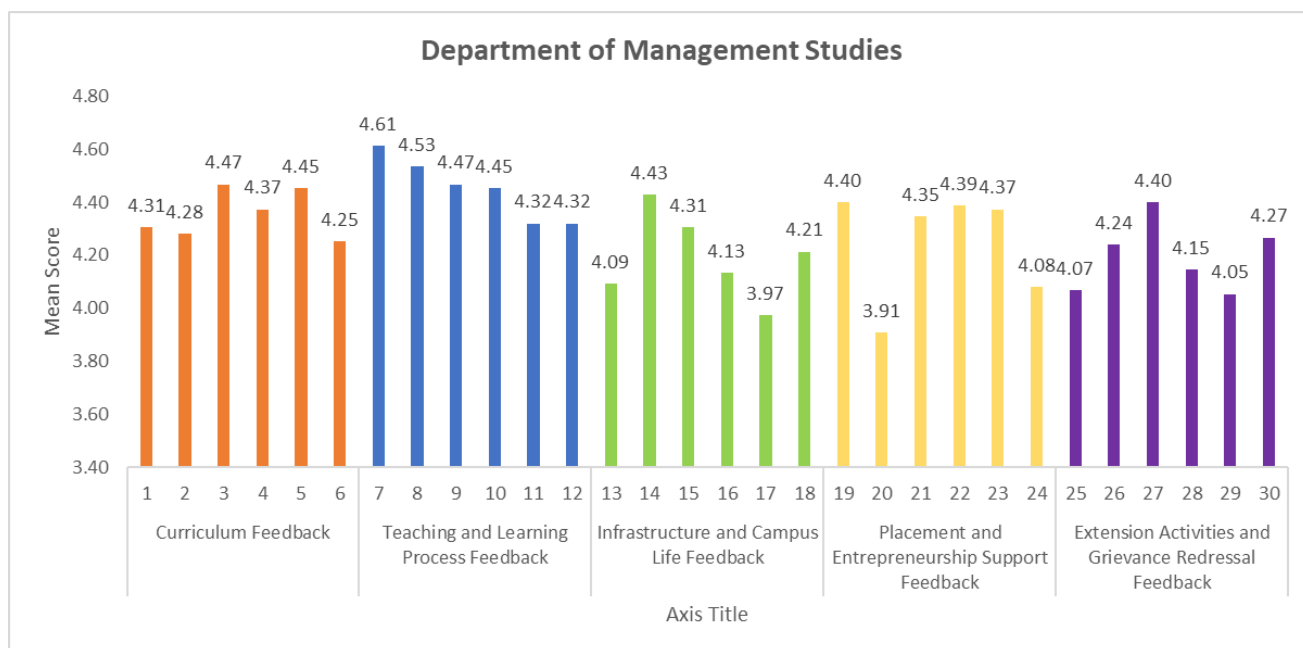


Table – 21: Department of Mathematics

Total Number of Students: 69

S.No.	Questions	Strongly Agree (%)	Agree (%)	Neither agree nor Disagree (%)	Disagree (%)	Strongly Disagree (%)	Mean score
Curriculum Feedback							
1.	The curriculum provides strong industry-oriented learning experiences.	70	26	2	0	2	4.29
2.	The courses effectively develop my technical skills.	67	28	4	0	1	4.30
3.	The program helps me develop essential soft skills for professional success.	63	31	4	0	2	4.29
4.	The curriculum incorporates valuable life skills and professional development opportunities.	67	30	2	0	1	4.41

5.	The courses emphasize ethical values and social responsibility.	69	28	2	0	1	4.28
6.	The program offers comprehensive exposure to the Indian knowledge system.	63	33	2	0	2	4.35
Teaching and Learning Process Feedback							
7.	Faculty members demonstrate high academic and professional qualifications.	69	24	6	0	1	4.74
8.	Faculty members effectively explain complex concepts with clarity.	56	39	4	0	1	4.64
9.	Teaching methods are engaging and support diverse learning styles.	63	31	4	0	2	4.42
10.	Faculty members maintain a supportive and approachable relationship with students.	63	31	4	0	2	4.55
11.	The syllabus is comprehensive and covers all essential topics thoroughly.	67	28	4	0	1	4.48
12.	Faculty members provide adequate support for self-learning and additional	59	35	4	0	2	4.55

	exploration.						
Infrastructure and Campus Life Feedback							
13.	Campus infrastructure supports effective learning through modern classrooms, laboratories, and advanced technological resources.	67	30	2	0	1	4.43
14.	Library facilities provide comprehensive academic and research resources for in-depth learning.	70	26	2	0	2	4.61
15.	Integrated campus services ensure student convenience, including banking, ATM, post office, canteen, and bookstore facilities.	70	24	4	0	2	4.46
16.	Health and wellness facilities offer professional medical support and comprehensive student care.	63	28	6	2	1	4.35
17.	Physical education and recreational facilities promote holistic student development and well-being.	67	24	7	0	2	4.13
18.	The campus	69	26	2	0	3	4.52

	environment enables academic, personal, and professional growth through inclusive and advanced infrastructure.						
Placement and Entrepreneurship Support Feedback							
19.	The university provides effective mentoring for career development.	67	31	2	0	0	4.35
20.	Placement drives are well-organized and offer quality job opportunities.	72	24	4	0	0	4.10
21.	The (Institutions Innovation Council) IIC supports student creativity (innovation) effectively.	65	28	7	0	0	4.38
22.	Entrepreneurship development activities are comprehensive and inspiring.	63	30	7	0	0	4.22
23.	The university provides excellent guidance for start-up initiatives.	65	26	7	2	0	4.23
24.	Placement support extends beyond job placement to holistic career guidance.	69	24	7	0	0	4.26
Extension Activities and Grievance Redressal Feedback							
25.	NSS, YRC, RRC activities contribute meaningfully to social awareness and development.	61	28	11	0	0	4.51

26.	Awareness programs (blood donation camp etc.,) effectively address societal challenges.	54	39	7	0	0	4.54
27.	The university actively supports government social schemes (Swatch Bharat, voter awareness, social responsibility programmes etc.).	60	33	7	0	0	4.51
28.	The university provides clear and accessible channels for reporting student grievances.	63	28	9	0	0	4.36
29.	Grievance redressal mechanisms are transparent and handled with confidentiality and fairness.	61	33	6	0	0	4.29
30.	The university demonstrates a proactive approach in resolving student concerns in a timely manner.	65	30	5	0	0	4.43

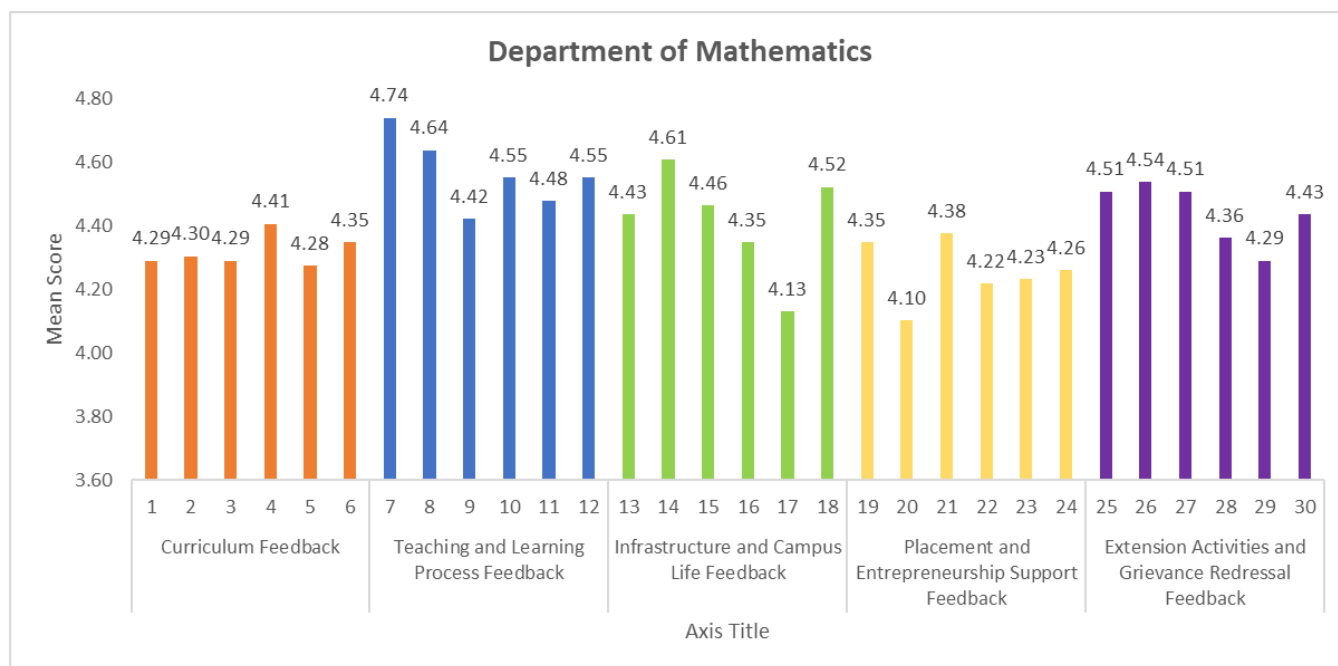


Table – 22: Department of Microbiology

Total Number of Students: 56

S.No.	Questions	Strongly Agree (%)	Agree (%)	Neither agree nor Disagree (%)	Disagree (%)	Strongly Disagree (%)	Mean score
Curriculum Feedback							
1.	The curriculum provides strong industry-oriented learning experiences.	70	26	2	0	2	4.11
2.	The courses effectively develop my technical skills.	67	28	4	0	1	4.20
3.	The program helps me develop essential soft skills for professional success.	63	31	4	0	2	3.88
4.	The curriculum incorporates valuable life skills and professional development opportunities.	67	30	2	0	1	4.11

5.	The courses emphasize ethical values and social responsibility.	69	28	2	0	1	4.25
6.	The program offers comprehensive exposure to the Indian knowledge system.	63	33	2	0	2	4.30
Teaching and Learning Process Feedback							
7.	Faculty members demonstrate high academic and professional qualifications.	69	24	6	0	1	4.61
8.	Faculty members effectively explain complex concepts with clarity.	56	39	4	0	1	4.52
9.	Teaching methods are engaging and support diverse learning styles.	63	31	4	0	2	4.39
10.	Faculty members maintain a supportive and approachable relationship with students.	63	31	4	0	2	4.38
11.	The syllabus is comprehensive and covers all essential topics thoroughly.	67	28	4	0	1	4.16
12.	Faculty members provide adequate support for self-learning and additional	59	35	4	0	2	4.46

	exploration.						
Infrastructure and Campus Life Feedback							
13.	Campus infrastructure supports effective learning through modern classrooms, laboratories, and advanced technological resources.	67	30	2	0	1	4.48
14.	Library facilities provide comprehensive academic and research resources for in-depth learning.	70	26	2	0	2	4.46
15.	Integrated campus services ensure student convenience, including banking, ATM, post office, canteen, and bookstore facilities.	70	24	4	0	2	4.63
16.	Health and wellness facilities offer professional medical support and comprehensive student care.	63	28	6	2	1	4.25
17.	Physical education and recreational facilities promote holistic student development and well-being.	67	24	7	0	2	3.88
18.	The campus	69	26	2	0	3	4.36

	environment enables academic, personal, and professional growth through inclusive and advanced infrastructure.						
Placement and Entrepreneurship Support Feedback							
19.	The university provides effective mentoring for career development.	67	31	2	0	0	4.34
20.	Placement drives are well-organized and offer quality job opportunities.	72	24	4	0	0	3.77
21.	The (Institutions Innovation Council) IIC supports student creativity (innovation) effectively.	65	28	7	0	0	4.20
22.	Entrepreneurship development activities are comprehensive and inspiring.	63	30	7	0	0	4.09
23.	The university provides excellent guidance for startup initiatives.	65	26	7	2	0	4.18
24.	Placement support extends beyond job placement to holistic career guidance.	69	24	7	0	0	3.80
Extension Activities and Grievance Redressal Feedback							
25.	NSS, YRC, RRC activities contribute meaningfully to social awareness and development.	61	28	11	0	0	4.27

26.	Awareness programs (blood donation camp etc.,) effectively address societal challenges.	54	39	7	0	0	4.45
27.	The university actively supports government social schemes (Swatch Bharat, voter awareness, social responsibility programmes etc.).	60	33	7	0	0	4.55
28.	The university provides clear and accessible channels for reporting student grievances.	63	28	9	0	0	4.11
29.	Grievance redressal mechanisms are transparent and handled with confidentiality and fairness.	61	33	6	0	0	4.07
30.	The university demonstrates a proactive approach in resolving student concerns in a timely manner.	65	30	5	0	0	4.09

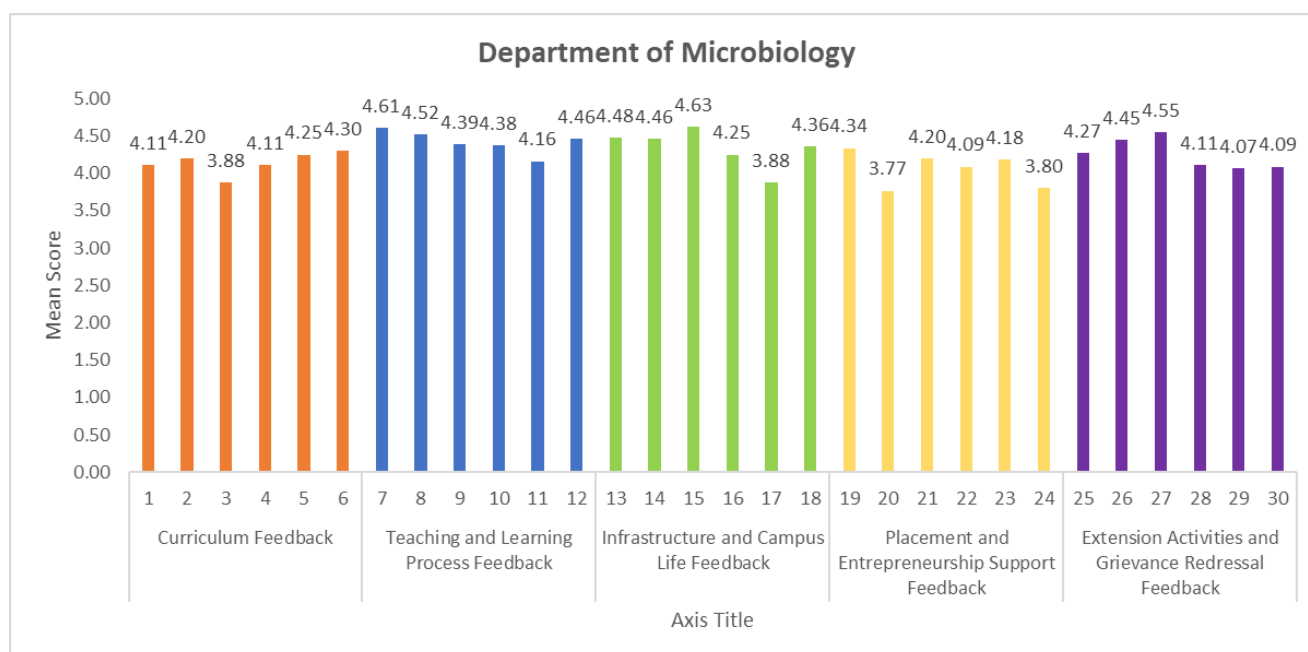


Table – 22: Department of Nutrition and Dietetics

Total Number of Students: 60

S.No.	Questions	Strongly Agree (%)	Agree (%)	Neither agree nor Disagree (%)	Disagree (%)	Strongly Disagree (%)	Mean score
Curriculum Feedback							
1.	The curriculum provides strong industry-oriented learning experiences.	70	26	2	0	2	4.20
2.	The courses effectively develop my technical skills.	67	28	4	0	1	4.15
3.	The program helps me develop essential soft skills for professional success.	63	31	4	0	2	4.35
4.	The curriculum incorporates valuable life skills and professional development opportunities.	67	30	2	0	1	4.32

5.	The courses emphasize ethical values and social responsibility.	69	28	2	0	1	4.27
6.	The program offers comprehensive exposure to the Indian knowledge system.	63	33	2	0	2	4.25
Teaching and Learning Process Feedback							
7.	Faculty members demonstrate high academic and professional qualifications.	69	24	6	0	1	4.52
8.	Faculty members effectively explain complex concepts with clarity.	56	39	4	0	1	4.48
9.	Teaching methods are engaging and support diverse learning styles.	63	31	4	0	2	4.37
10.	Faculty members maintain a supportive and approachable relationship with students.	63	31	4	0	2	4.20
11.	The syllabus is comprehensive and covers all essential topics thoroughly.	67	28	4	0	1	4.47
12.	Faculty members provide adequate support for self-learning and additional	59	35	4	0	2	4.38

	exploration.						
Infrastructure and Campus Life Feedback							
13.	Campus infrastructure supports effective learning through modern classrooms, laboratories, and advanced technological resources.	67	30	2	0	1	4.13
14.	Library facilities provide comprehensive academic and research resources for in-depth learning.	70	26	2	0	2	4.48
15.	Integrated campus services ensure student convenience, including banking, ATM, post office, canteen, and bookstore facilities.	70	24	4	0	2	4.47
16.	Health and wellness facilities offer professional medical support and comprehensive student care.	63	28	6	2	1	4.25
17.	Physical education and recreational facilities promote holistic student development and well-being.	67	24	7	0	2	4.03
18.	The campus	69	26	2	0	3	4.25

	environment enables academic, personal, and professional growth through inclusive and advanced infrastructure.						
Placement and Entrepreneurship Support Feedback							
19.	The university provides effective mentoring for career development.	67	31	2	0	0	4.40
20.	Placement drives are well-organized and offer quality job opportunities.	72	24	4	0	0	3.98
21.	The (Institutions Innovation Council) IIC supports student creativity (innovation) effectively.	65	28	7	0	0	4.30
22.	Entrepreneurship development activities are comprehensive and inspiring.	63	30	7	0	0	4.20
23.	The university provides excellent guidance for start-up initiatives.	65	26	7	2	0	4.27
24.	Placement support extends beyond job placement to holistic career guidance.	69	24	7	0	0	4.08
Extension Activities and Grievance Redressal Feedback							
25.	NSS, YRC, RRC activities contribute meaningfully to social awareness and development.	61	28	11	0	0	4.43

26.	Awareness programs (blood donation camp etc.,) effectively address societal challenges.	54	39	7	0	0	4.53
27.	The university actively supports government social schemes (Swatch Bharat, voter awareness, social responsibility programmes etc.).	60	33	7	0	0	4.57
28.	The university provides clear and accessible channels for reporting student grievances.	63	28	9	0	0	4.37
29.	Grievance redressal mechanisms are transparent and handled with confidentiality and fairness.	61	33	6	0	0	4.30
30.	The university demonstrates a proactive approach in resolving student concerns in a timely manner.	65	30	5	0	0	4.37

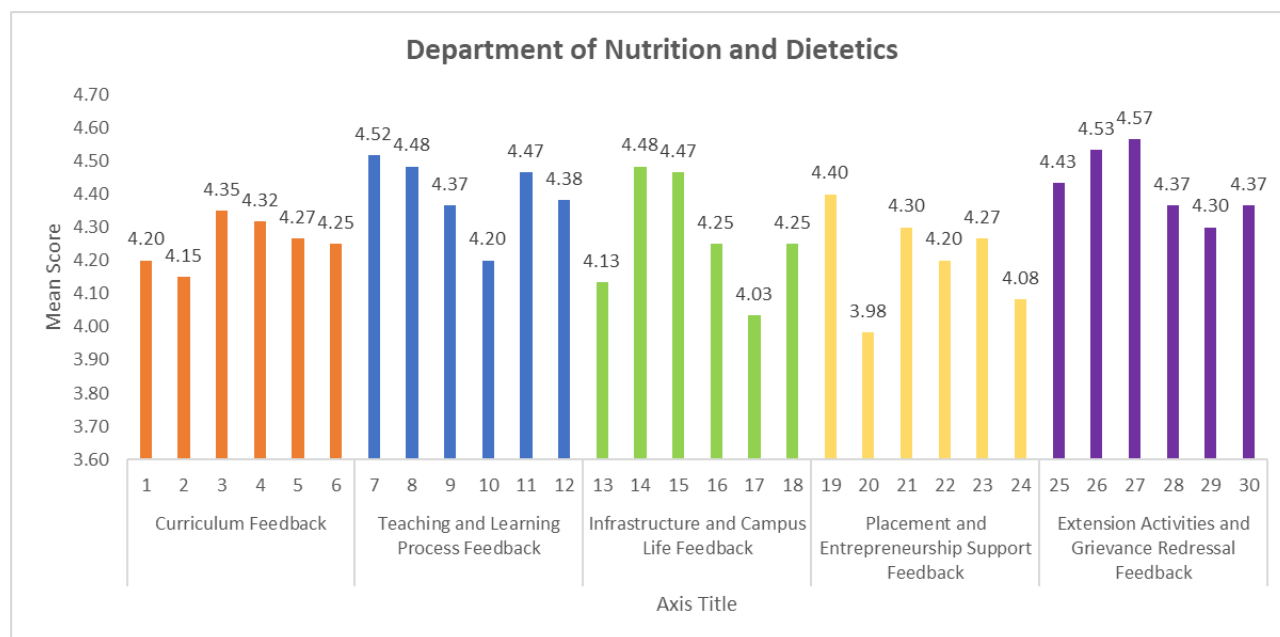


Table – 23: Department of Physics

Total Number of Students: 56

S.No.	Questions	Strongly Agree (%)	Agree (%)	Neither agree nor Disagree (%)	Disagree (%)	Strongly Disagree (%)	Mean score
Curriculum Feedback							
1.	The curriculum provides strong industry-oriented learning experiences.	70	26	2	0	2	4.45
2.	The courses effectively develop my technical skills.	67	28	4	0	1	4.30
3.	The program helps me develop essential soft skills for professional success.	63	31	4	0	2	4.41
4.	The curriculum incorporates valuable life skills and professional development opportunities.	67	30	2	0	1	4.36

5.	The courses emphasize ethical values and social responsibility.	69	28	2	0	1	4.43
6.	The program offers comprehensive exposure to the Indian knowledge system.	63	33	2	0	2	4.30
Teaching and Learning Process Feedback							
7.	Faculty members demonstrate high academic and professional qualifications.	69	24	6	0	1	4.63
8.	Faculty members effectively explain complex concepts with clarity.	56	39	4	0	1	4.55
9.	Teaching methods are engaging and support diverse learning styles.	63	31	4	0	2	4.52
10.	Faculty members maintain a supportive and approachable relationship with students.	63	31	4	0	2	4.54
11.	The syllabus is comprehensive and covers all essential topics thoroughly.	67	28	4	0	1	4.46
12.	Faculty members provide adequate support for self-learning and additional	59	35	4	0	2	4.50

	exploration.						
Infrastructure and Campus Life Feedback							
13.	Campus infrastructure supports effective learning through modern classrooms, laboratories, and advanced technological resources.	67	30	2	0	1	4.48
14.	Library facilities provide comprehensive academic and research resources for in-depth learning.	70	26	2	0	2	4.54
15.	Integrated campus services ensure student convenience, including banking, ATM, post office, canteen, and bookstore facilities.	70	24	4	0	2	4.59
16.	Health and wellness facilities offer professional medical support and comprehensive student care.	63	28	6	2	1	4.38
17.	Physical education and recreational facilities promote holistic student development and well-being.	67	24	7	0	2	4.38
18.	The campus	69	26	2	0	3	4.52

	environment enables academic, personal, and professional growth through inclusive and advanced infrastructure.						
Placement and Entrepreneurship Support Feedback							
19.	The university provides effective mentoring for career development.	67	31	2	0	0	4.54
20.	Placement drives are well-organized and offer quality job opportunities.	72	24	4	0	0	4.34
21.	The (Institutions Innovation Council) IIC supports student creativity (innovation) effectively.	65	28	7	0	0	4.30
22.	Entrepreneurship development activities are comprehensive and inspiring.	63	30	7	0	0	4.34
23.	The university provides excellent guidance for startup initiatives.	65	26	7	2	0	4.45
24.	Placement support extends beyond job placement to holistic career guidance.	69	24	7	0	0	4.34
Extension Activities and Grievance Redressal Feedback							
25.	NSS, YRC, RRC activities contribute meaningfully to social awareness and development.	61	28	11	0	0	4.48

26.	Awareness programs (blood donation camp etc.,) effectively address societal challenges.	54	39	7	0	0	4.63
27.	The university actively supports government social schemes (Swatch Bharat, voter awareness, social responsibility programmes etc.).	60	33	7	0	0	4.54
28.	The university provides clear and accessible channels for reporting student grievances.	63	28	9	0	0	4.48
29.	Grievance redressal mechanisms are transparent and handled with confidentiality and fairness.	61	33	6	0	0	4.45
30.	The university demonstrates a proactive approach in resolving student concerns in a timely manner.	65	30	5	0	0	4.52

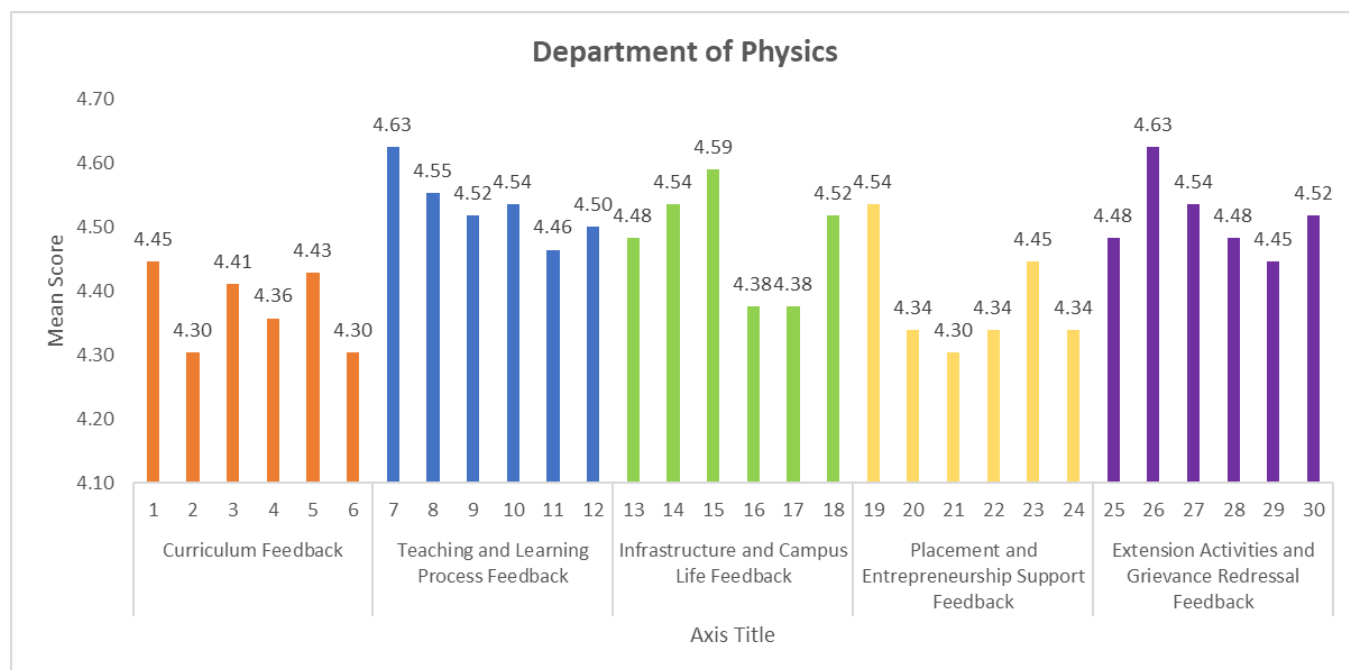


Table – 24: Department of Psychology

Total Number of Students: 48

S.No.	Questions	Strongly Agree (%)	Agree (%)	Neither agree nor Disagree (%)	Disagree (%)	Strongly Disagree (%)	Mean score
Curriculum Feedback							
1.	The curriculum provides strong industry-oriented learning experiences.	70	26	2	0	2	3.90
2.	The courses effectively develop my technical skills.	67	28	4	0	1	3.88
3.	The program helps me develop essential soft skills for professional success.	63	31	4	0	2	4.13
4.	The curriculum incorporates valuable life skills and professional development	67	30	2	0	1	3.98

	opportunities.						
5.	The courses emphasize ethical values and social responsibility.	69	28	2	0	1	4.17
6.	The program offers comprehensive exposure to the Indian knowledge system.	63	33	2	0	2	3.79
Teaching and Learning Process Feedback							
7.	Faculty members demonstrate high academic and professional qualifications.	69	24	6	0	1	4.52
8.	Faculty members effectively explain complex concepts with clarity.	56	39	4	0	1	4.40
9.	Teaching methods are engaging and support diverse learning styles.	63	31	4	0	2	4.23
10.	Faculty members maintain a supportive and approachable relationship with students.	63	31	4	0	2	4.19
11.	The syllabus is comprehensive and covers all essential topics thoroughly.	67	28	4	0	1	3.92

12.	Faculty members provide adequate support for self-learning and additional exploration.	59	35	4	0	2	4.23
Infrastructure and Campus Life Feedback							
13.	Campus infrastructure supports effective learning through modern classrooms, laboratories, and advanced technological resources.	67	30	2	0	1	3.73
14.	Library facilities provide comprehensive academic and research resources for in-depth learning.	70	26	2	0	2	3.73
15.	Integrated campus services ensure student convenience, including banking, ATM, post office, canteen, and bookstore facilities.	70	24	4	0	2	3.65
16.	Health and wellness facilities offer professional medical support and comprehensive student care.	63	28	6	2	1	3.38
17.	Physical education and recreational facilities promote holistic student development and well-being.	67	24	7	0	2	3.19

18.	The campus environment enables academic, personal, and professional growth through inclusive and advanced infrastructure.	69	26	2	0	3	3.50
Placement and Entrepreneurship Support Feedback							
19.	The university provides effective mentoring for career development.	67	31	2	0	0	3.88
20.	Placement drives are well-organized and offer quality job opportunities.	72	24	4	0	0	3.02
21.	The (Institutions Innovation Council) IIC supports student creativity (innovation) effectively.	65	28	7	0	0	3.21
22.	Entrepreneurship development activities are comprehensive and inspiring.	63	30	7	0	0	3.23
23.	The university provides excellent guidance for start-up initiatives.	65	26	7	2	0	3.27
24.	Placement support extends beyond job placement to holistic career guidance.	69	24	7	0	0	3.10
Extension Activities and Grievance Redressal Feedback							
25.	NSS, YRC, RRC activities contribute meaningfully to social awareness and	61	28	11	0	0	3.67

	development.						
26.	Awareness programs (blood donation camp etc.,) effectively address societal challenges.	54	39	7	0	0	3.94
27.	The university actively supports government social schemes (Swatch Bharat, voter awareness, social responsibility programmes etc.).	60	33	7	0	0	3.92
28.	The university provides clear and accessible channels for reporting student grievances.	63	28	9	0	0	3.44
29.	Grievance redressal mechanisms are transparent and handled with confidentiality and fairness.	61	33	6	0	0	3.48
30.	The university demonstrates a proactive approach in resolving student concerns in a timely manner.	65	30	5	0	0	3.44

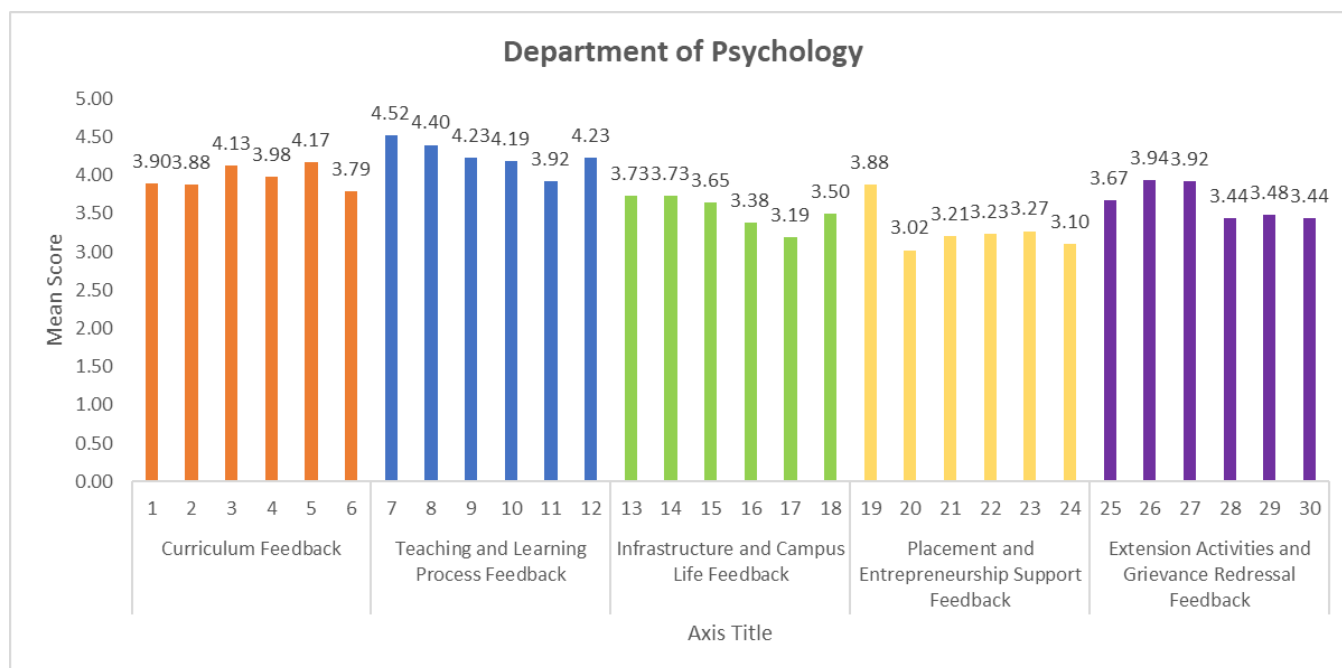


Table – 25: Department of Sociology

Total Number of Students: 13

S.No.	Questions	Strongly Agree (%)	Agree (%)	Neither agree nor Disagree (%)	Disagree (%)	Strongly Disagree (%)	Mean score
Curriculum Feedback							
1.	The curriculum provides strong industry-oriented learning experiences.	70	26	2	0	2	3.77
2.	The courses effectively develop my technical skills.	67	28	4	0	1	3.77
3.	The program helps me develop essential soft skills for professional success.	63	31	4	0	2	3.77
4.	The curriculum incorporates valuable life skills and professional development	67	30	2	0	1	3.85

	opportunities.						
5.	The courses emphasize ethical values and social responsibility.	69	28	2	0	1	4.15
6.	The program offers comprehensive exposure to the Indian knowledge system.	63	33	2	0	2	3.92
Teaching and Learning Process Feedback							
7.	Faculty members demonstrate high academic and professional qualifications.	69	24	6	0	1	3.62
8.	Faculty members effectively explain complex concepts with clarity.	56	39	4	0	1	3.92
9.	Teaching methods are engaging and support diverse learning styles.	63	31	4	0	2	3.85
10.	Faculty members maintain a supportive and approachable relationship with students.	63	31	4	0	2	3.62
11.	The syllabus is comprehensive and covers all essential topics thoroughly.	67	28	4	0	1	3.31

12.	Faculty members provide adequate support for self-learning and additional exploration.	59	35	4	0	2	3.54
Infrastructure and Campus Life Feedback							
13.	Campus infrastructure supports effective learning through modern classrooms, laboratories, and advanced technological resources.	67	30	2	0	1	3.62
14.	Library facilities provide comprehensive academic and research resources for in-depth learning.	70	26	2	0	2	3.54
15.	Integrated campus services ensure student convenience, including banking, ATM, post office, canteen, and bookstore facilities.	70	24	4	0	2	3.38
16.	Health and wellness facilities offer professional medical support and comprehensive student care.	63	28	6	2	1	3.69
17.	Physical education and recreational facilities promote holistic student development and well-being.	67	24	7	0	2	3.15

18.	The campus environment enables academic, personal, and professional growth through inclusive and advanced infrastructure.	69	26	2	0	3	3.31
Placement and Entrepreneurship Support Feedback							
19.	The university provides effective mentoring for career development.	67	31	2	0	0	3.38
20.	Placement drives are well-organized and offer quality job opportunities.	72	24	4	0	0	3.46
21.	The (Institutions Innovation Council) IIC supports student creativity (innovation) effectively.	65	28	7	0	0	3.54
22.	Entrepreneurship development activities are comprehensive and inspiring.	63	30	7	0	0	3.38
23.	The university provides excellent guidance for start-up initiatives.	65	26	7	2	0	3.46
24.	Placement support extends beyond job placement to holistic career guidance.	69	24	7	0	0	3.23
Extension Activities and Grievance Redressal Feedback							
25.	NSS, YRC, RRC activities contribute meaningfully to social awareness and	61	28	11	0	0	3.46

	development.						
26.	Awareness programs (blood donation camp etc.,) effectively address societal challenges.	54	39	7	0	0	3.92
27.	The university actively supports government social schemes (Swatch Bharat, voter awareness, social responsibility programmes etc.).	60	33	7	0	0	3.69
28.	The university provides clear and accessible channels for reporting student grievances.	63	28	9	0	0	3.46
29.	Grievance redressal mechanisms are transparent and handled with confidentiality and fairness.	61	33	6	0	0	3.54
30.	The university demonstrates a proactive approach in resolving student concerns in a timely manner.	65	30	5	0	0	3.38

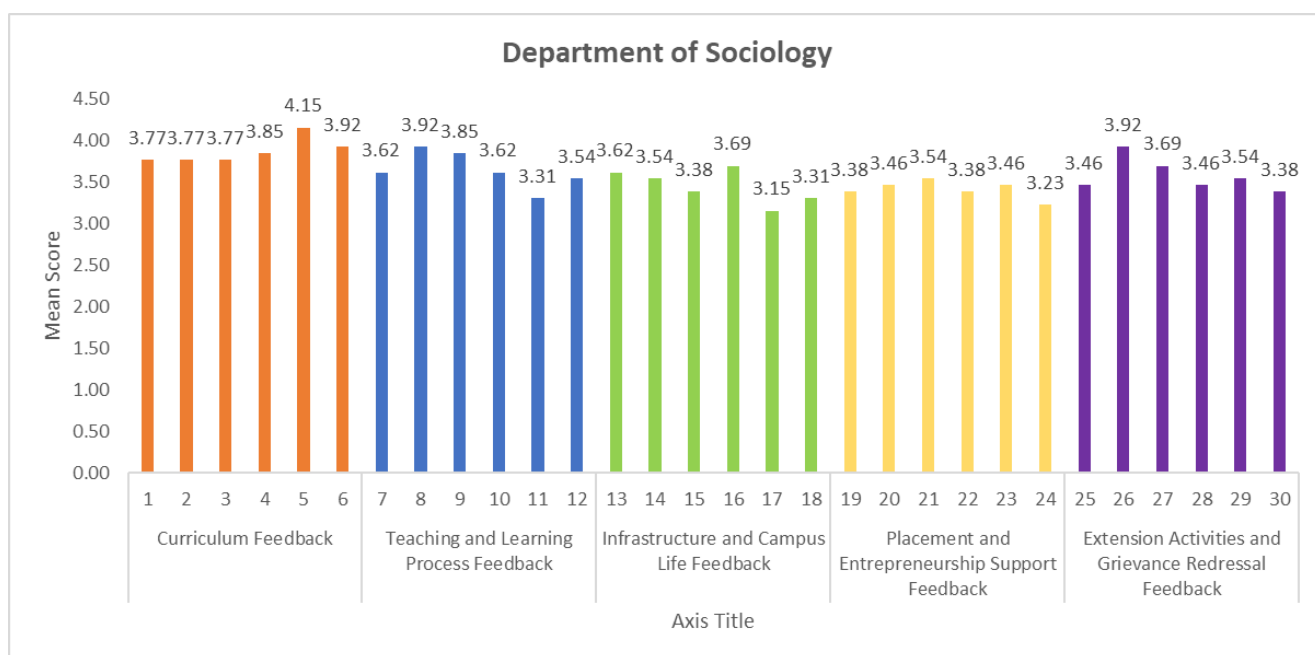


Table – 26: Department of Statistics

Total Number of Students: 67

S.No.	Questions	Strongly Agree (%)	Agree (%)	Neither agree nor Disagree (%)	Disagree (%)	Strongly Disagree (%)	Mean score
Curriculum Feedback							
1.	The curriculum provides strong industry-oriented learning experiences.	70	26	2	0	2	4.04
2.	The courses effectively develop my technical skills.	67	28	4	0	1	4.04
3.	The program helps me develop essential soft skills for professional success.	63	31	4	0	2	4.01
4.	The curriculum incorporates valuable life skills and professional development opportunities.	67	30	2	0	1	3.91

5.	The courses emphasize ethical values and social responsibility.	69	28	2	0	1	3.81
6.	The program offers comprehensive exposure to the Indian knowledge system.	63	33	2	0	2	3.93
Teaching and Learning Process Feedback							
7.	Faculty members demonstrate high academic and professional qualifications.	69	24	6	0	1	4.27
8.	Faculty members effectively explain complex concepts with clarity.	56	39	4	0	1	4.19
9.	Teaching methods are engaging and support diverse learning styles.	63	31	4	0	2	4.10
10.	Faculty members maintain a supportive and approachable relationship with students.	63	31	4	0	2	4.03
11.	The syllabus is comprehensive and covers all essential topics thoroughly.	67	28	4	0	1	3.94
12.	Faculty members provide adequate support for self-learning and additional	59	35	4	0	2	4.12

	exploration.						
Infrastructure and Campus Life Feedback							
13.	Campus infrastructure supports effective learning through modern classrooms, laboratories, and advanced technological resources.	67	30	2	0	1	3.93
14.	Library facilities provide comprehensive academic and research resources for in-depth learning.	70	26	2	0	2	3.91
15.	Integrated campus services ensure student convenience, including banking, ATM, post office, canteen, and bookstore facilities.	70	24	4	0	2	4.12
16.	Health and wellness facilities offer professional medical support and comprehensive student care.	63	28	6	2	1	4.01
17.	Physical education and recreational facilities promote holistic student development and well-being.	67	24	7	0	2	3.70
18.	The campus	69	26	2	0	3	4.03

	environment enables academic, personal, and professional growth through inclusive and advanced infrastructure.						
Placement and Entrepreneurship Support Feedback							
19.	The university provides effective mentoring for career development.	67	31	2	0	0	3.97
20.	Placement drives are well-organized and offer quality job opportunities.	72	24	4	0	0	3.63
21.	The (Institutions Innovation Council) IIC supports student creativity (innovation) effectively.	65	28	7	0	0	3.85
22.	Entrepreneurship development activities are comprehensive and inspiring.	63	30	7	0	0	3.84
23.	The university provides excellent guidance for start-up initiatives.	65	26	7	2	0	3.91
24.	Placement support extends beyond job placement to holistic career guidance.	69	24	7	0	0	3.78
Extension Activities and Grievance Redressal Feedback							
25.	NSS, YRC, RRC activities contribute meaningfully to social awareness and development.	61	28	11	0	0	4.40

26.	Awareness programs (blood donation camp etc.,) effectively address societal challenges.	54	39	7	0	0	4.25
27.	The university actively supports government social schemes (Swatch Bharat, voter awareness, social responsibility programmes etc.).	60	33	7	0	0	4.19
28.	The university provides clear and accessible channels for reporting student grievances.	63	28	9	0	0	3.94
29.	Grievance redressal mechanisms are transparent and handled with confidentiality and fairness.	61	33	6	0	0	3.96
30.	The university demonstrates a proactive approach in resolving student concerns in a timely manner.	65	30	5	0	0	4.03

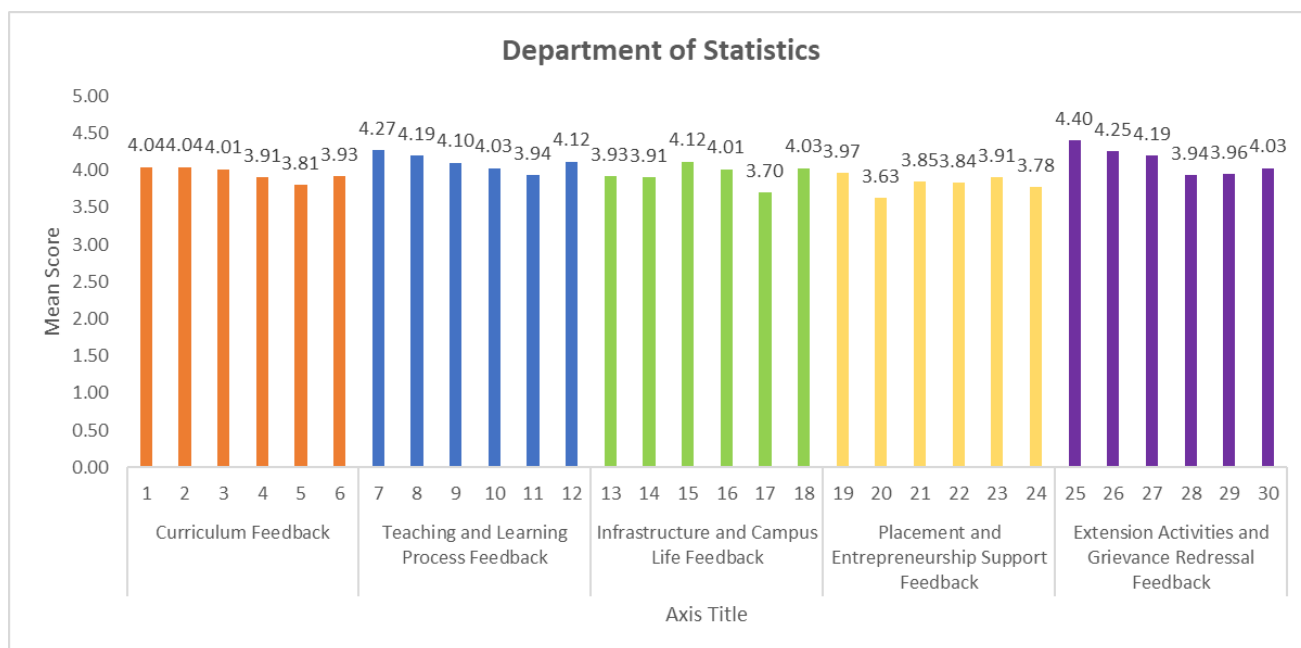


Table – 27: Department of Tamil

Total Number of Students: 58

S.No.	Questions	Strongly Agree (%)	Agree (%)	Neither agree nor Disagree (%)	Disagree (%)	Strongly Disagree (%)	Mean score
Curriculum Feedback							
1.	The curriculum provides strong industry-oriented learning experiences.	70	26	2	0	2	4.98
2.	The courses effectively develop my technical skills.	67	28	4	0	1	4.97
3.	The program helps me develop essential soft skills for professional success.	63	31	4	0	2	4.93
4.	The curriculum incorporates valuable life skills and professional development opportunities.	67	30	2	0	1	4.97

5.	The courses emphasize ethical values and social responsibility.	69	28	2	0	1	4.95
6.	The program offers comprehensive exposure to the Indian knowledge system.	63	33	2	0	2	4.97
Teaching and Learning Process Feedback							
7.	Faculty members demonstrate high academic and professional qualifications.	69	24	6	0	1	4.95
8.	Faculty members effectively explain complex concepts with clarity.	56	39	4	0	1	4.95
9.	Teaching methods are engaging and support diverse learning styles.	63	31	4	0	2	4.95
10.	Faculty members maintain a supportive and approachable relationship with students.	63	31	4	0	2	4.97
11.	The syllabus is comprehensive and covers all essential topics thoroughly.	67	28	4	0	1	4.97
12.	Faculty members provide adequate support for self-learning and additional	59	35	4	0	2	4.97

	exploration.						
Infrastructure and Campus Life Feedback							
13.	Campus infrastructure supports effective learning through modern classrooms, laboratories, and advanced technological resources.	67	30	2	0	1	4.93
14.	Library facilities provide comprehensive academic and research resources for in-depth learning.	70	26	2	0	2	4.98
15.	Integrated campus services ensure student convenience, including banking, ATM, post office, canteen, and bookstore facilities.	70	24	4	0	2	5.00
16.	Health and wellness facilities offer professional medical support and comprehensive student care.	63	28	6	2	1	4.97
17.	Physical education and recreational facilities promote holistic student development and well-being.	67	24	7	0	2	4.93
18.	The campus	69	26	2	0	3	4.95

	environment enables academic, personal, and professional growth through inclusive and advanced infrastructure.						
Placement and Entrepreneurship Support Feedback							
19.	The university provides effective mentoring for career development.	67	31	2	0	0	4.95
20.	Placement drives are well-organized and offer quality job opportunities.	72	24	4	0	0	4.95
21.	The (Institutions Innovation Council) IIC supports student creativity (innovation) effectively.	65	28	7	0	0	4.91
22.	Entrepreneurship development activities are comprehensive and inspiring.	63	30	7	0	0	4.93
23.	The university provides excellent guidance for start-up initiatives.	65	26	7	2	0	4.97
24.	Placement support extends beyond job placement to holistic career guidance.	69	24	7	0	0	4.97
Extension Activities and Grievance Redressal Feedback							
25.	NSS, YRC, RRC activities contribute meaningfully to social awareness and development.	61	28	11	0	0	4.91

26.	Awareness programs (blood donation camp etc.,) effectively address societal challenges.	54	39	7	0	0	4.95
27.	The university actively supports government social schemes (Swatch Bharat, voter awareness, social responsibility programmes etc.).	60	33	7	0	0	4.97
28.	The university provides clear and accessible channels for reporting student grievances.	63	28	9	0	0	4.95
29.	Grievance redressal mechanisms are transparent and handled with confidentiality and fairness.	61	33	6	0	0	4.93
30.	The university demonstrates a proactive approach in resolving student concerns in a timely manner.	65	30	5	0	0	4.97

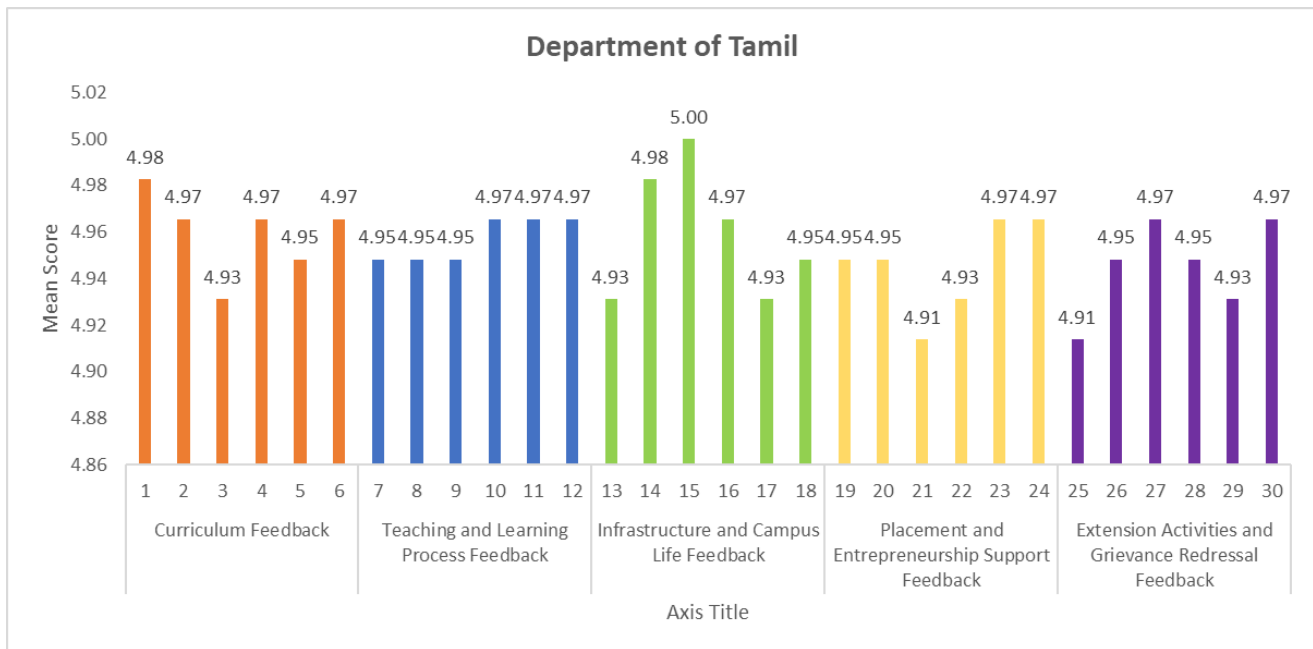


Table – 28: Department of Textiles and Apparel Design

Total Number of Students: 181

S.No.	Questions	Strongly Agree (%)	Agree (%)	Neither agree nor Disagree (%)	Disagree (%)	Strongly Disagree (%)	Mean score
Curriculum Feedback							
1.	The curriculum provides strong industry-oriented learning experiences.	70	26	2	0	2	4.47
2.	The courses effectively develop my technical skills.	67	28	4	0	1	4.50
3.	The program helps me develop essential soft skills for professional success.	63	31	4	0	2	4.49
4.	The curriculum incorporates valuable life skills and professional development opportunities.	67	30	2	0	1	4.34

5.	The courses emphasize ethical values and social responsibility.	69	28	2	0	1	4.37
6.	The program offers comprehensive exposure to the Indian knowledge system.	63	33	2	0	2	4.40
Teaching and Learning Process Feedback							
7.	Faculty members demonstrate high academic and professional qualifications.	69	24	6	0	1	4.52
8.	Faculty members effectively explain complex concepts with clarity.	56	39	4	0	1	4.41
9.	Teaching methods are engaging and support diverse learning styles.	63	31	4	0	2	4.45
10.	Faculty members maintain a supportive and approachable relationship with students.	63	31	4	0	2	4.28
11.	The syllabus is comprehensive and covers all essential topics thoroughly.	67	28	4	0	1	4.33
12.	Faculty members provide adequate support for self-learning and additional	59	35	4	0	2	4.37

	exploration.						
Infrastructure and Campus Life Feedback							
13.	Campus infrastructure supports effective learning through modern classrooms, laboratories, and advanced technological resources.	67	30	2	0	1	4.56
14.	Library facilities provide comprehensive academic and research resources for in-depth learning.	70	26	2	0	2	4.31
15.	Integrated campus services ensure student convenience, including banking, ATM, post office, canteen, and bookstore facilities.	70	24	4	0	2	4.43
16.	Health and wellness facilities offer professional medical support and comprehensive student care.	63	28	6	2	1	4.25
17.	Physical education and recreational facilities promote holistic student development and well-being.	67	24	7	0	2	4.26
18.	The campus	69	26	2	0	3	4.31

	environment enables academic, personal, and professional growth through inclusive and advanced infrastructure.						
Placement and Entrepreneurship Support Feedback							
19.	The university provides effective mentoring for career development.	67	31	2	0	0	4.56
20.	Placement drives are well-organized and offer quality job opportunities.	72	24	4	0	0	4.24
21.	The (Institutions Innovation Council) IIC supports student creativity (innovation) effectively.	65	28	7	0	0	4.39
22.	Entrepreneurship development activities are comprehensive and inspiring.	63	30	7	0	0	4.42
23.	The university provides excellent guidance for start-up initiatives.	65	26	7	2	0	4.40
24.	Placement support extends beyond job placement to holistic career guidance.	69	24	7	0	0	4.35
Extension Activities and Grievance Redressal Feedback							
25.	NSS, YRC, RRC activities contribute meaningfully to social awareness and development.	61	28	11	0	0	4.31

26.	Awareness programs (blood donation camp etc.,) effectively address societal challenges.	54	39	7	0	0	4.34
27.	The university actively supports government social schemes (Swatch Bharat, voter awareness, social responsibility programmes etc.).	60	33	7	0	0	4.39
28.	The university provides clear and accessible channels for reporting student grievances.	63	28	9	0	0	4.33
29.	Grievance redressal mechanisms are transparent and handled with confidentiality and fairness.	61	33	6	0	0	4.27
30.	The university demonstrates a proactive approach in resolving student concerns in a timely manner.	65	30	5	0	0	4.41

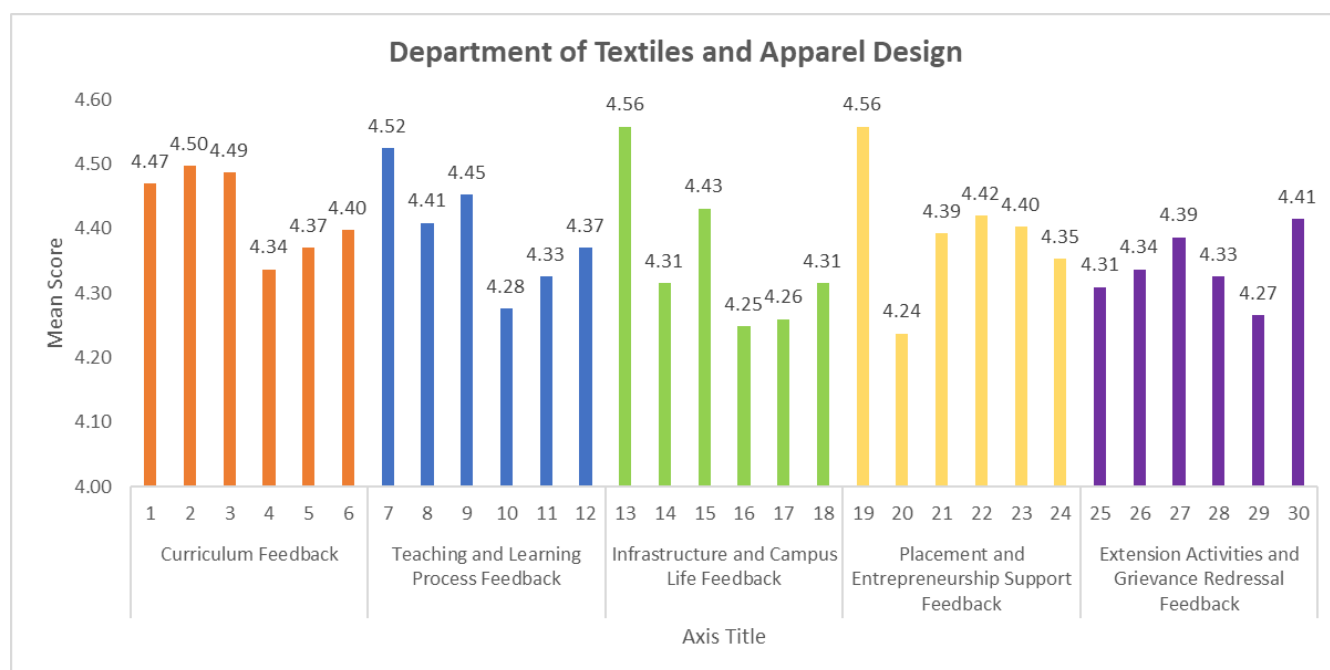


Table – 29: Department of Zoology

Total Number of Students: 66

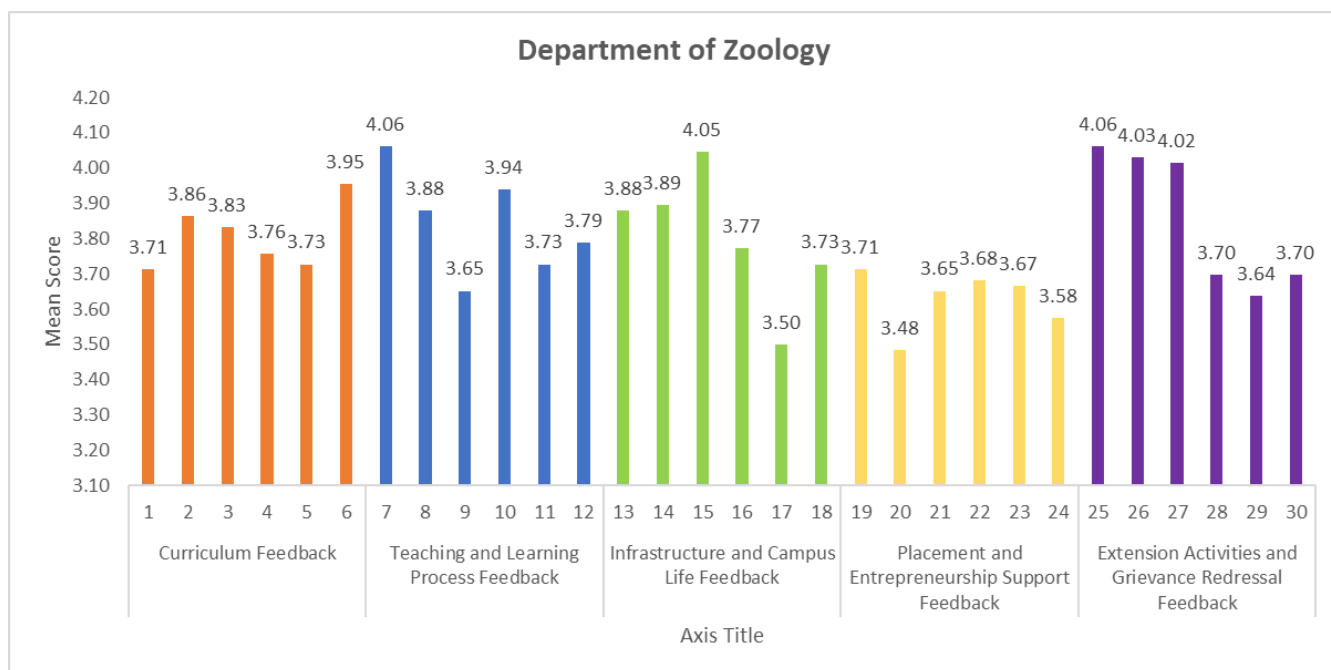
S.No.	Questions	Strongly Agree (%)	Agree (%)	Neither agree nor Disagree (%)	Disagree (%)	Strongly Disagree (%)	Mean score
Curriculum Feedback							
1.	The curriculum provides strong industry-oriented learning experiences.	70	26	2	0	2	3.71
2.	The courses effectively develop my technical skills.	67	28	4	0	1	3.86
3.	The program helps me develop essential soft skills for professional success.	63	31	4	0	2	3.83
4.	The curriculum incorporates valuable life skills and professional development opportunities.	67	30	2	0	1	3.76

5.	The courses emphasize ethical values and social responsibility.	69	28	2	0	1	3.73
6.	The program offers comprehensive exposure to the Indian knowledge system.	63	33	2	0	2	3.95
Teaching and Learning Process Feedback							
7.	Faculty members demonstrate high academic and professional qualifications.	69	24	6	0	1	4.06
8.	Faculty members effectively explain complex concepts with clarity.	56	39	4	0	1	3.88
9.	Teaching methods are engaging and support diverse learning styles.	63	31	4	0	2	3.65
10.	Faculty members maintain a supportive and approachable relationship with students.	63	31	4	0	2	3.94
11.	The syllabus is comprehensive and covers all essential topics thoroughly.	67	28	4	0	1	3.73
12.	Faculty members provide adequate support for self-learning and additional	59	35	4	0	2	3.79

	exploration.						
Infrastructure and Campus Life Feedback							
13.	Campus infrastructure supports effective learning through modern classrooms, laboratories, and advanced technological resources.	67	30	2	0	1	3.88
14.	Library facilities provide comprehensive academic and research resources for in-depth learning.	70	26	2	0	2	3.89
15.	Integrated campus services ensure student convenience, including banking, ATM, post office, canteen, and bookstore facilities.	70	24	4	0	2	4.05
16.	Health and wellness facilities offer professional medical support and comprehensive student care.	63	28	6	2	1	3.77
17.	Physical education and recreational facilities promote holistic student development and well-being.	67	24	7	0	2	3.50
18.	The campus	69	26	2	0	3	3.73

	environment enables academic, personal, and professional growth through inclusive and advanced infrastructure.						
Placement and Entrepreneurship Support Feedback							
19.	The university provides effective mentoring for career development.	67	31	2	0	0	3.71
20.	Placement drives are well-organized and offer quality job opportunities.	72	24	4	0	0	3.48
21.	The (Institutions Innovation Council) IIC supports student creativity (innovation) effectively.	65	28	7	0	0	3.65
22.	Entrepreneurship development activities are comprehensive and inspiring.	63	30	7	0	0	3.68
23.	The university provides excellent guidance for start-up initiatives.	65	26	7	2	0	3.67
24.	Placement support extends beyond job placement to holistic career guidance.	69	24	7	0	0	3.58
Extension Activities and Grievance Redressal Feedback							
25.	NSS, YRC, RRC activities contribute meaningfully to social awareness and development.	61	28	11	0	0	4.06

26.	Awareness programs (blood donation camp etc.,) effectively address societal challenges.	54	39	7	0	0	4.03
27.	The university actively supports government social schemes (Swatch Bharat, voter awareness, social responsibility programmes etc.).	60	33	7	0	0	4.02
28.	The university provides clear and accessible channels for reporting student grievances.	63	28	9	0	0	3.70
29.	Grievance redressal mechanisms are transparent and handled with confidentiality and fairness.	61	33	6	0	0	3.64
30.	The university demonstrates a proactive approach in resolving student concerns in a timely manner.	65	30	5	0	0	3.70





பெரியார் பல்கலைக்கழகம் PERIYAR UNIVERSITY

NAAC A⁺⁺ Grade - State University - NIRF Rank 94
State Public University Rank 25 – SDG Institutions Rank – Band: 11-50
SALEM- 636011, TAMIL NADU

Stakeholders Feedback Analysis Report – Action Taken Report 2024-25 Students Feedback Analysis Report

Observation	Action Taken
Students from various departments have requested adequate infrastructure and equipment for sports.	The physical education department has proposed measures for the development of sports.
A few students have requested to increase the possibilities of getting jobs in various sectors.	Career guidance sessions and skill development workshops have been organized to enhance students' employability in various sectors.
Students have requested improvements in hostel and recreational facilities.	Necessary steps have been initiated to enhance hostel infrastructure and recreational amenities. Maintenance and renovation work have been planned in phases to ensure better accommodation and leisure facilities for students.
Many students have asked for strengthened placement training programs.	Placement training programs have been strengthened to enhance employability.
Some students have suggested improvements to the canteen facilities.	Feedback regarding the canteen has been reviewed, and measures have been taken to improve food quality, hygiene, and menu variety. Regular monitoring is being conducted to maintain standards.
Students have expressed the need for further development in extracurricular and outreach activities.	The Departments have increased support for clubs, cultural events and community outreach programs. Students are being encouraged to participate actively in intercollegiate competitions and social service initiatives.


Director – IQAC


Registrar (FAC)